

FEATURES

- High Reliability Proven Design
- DCR5900A22
- Forced Air Cooling
- Redundant Fan
- RC Snubber
- Pressure Switch
- IR Temperature Sensor (Optional)
- Fuse (Optional)
- Gate Drive (Optional)
- Easily Maintainable Design

APPLICATIONS

- Power Generation
- Renewables

The Dynex Standard Assemblies range consists of proven high reliability Heatsink Assemblies for a challenging range of applications.

The DSS3800BM-W3C-0415 is a controlled 3 Phase AC switch spread across 3 individual phase arm assemblies. The forced air-cooled design has been optimised for high reliability operation for deployment in applications that require continuous operation and long lifetime. The Thyristor characteristics have been tailored specifically to lower the overall losses of the assembly to improve reliability as well as increase efficiency.

The design can be altered to suit a specific application requirement. Contact your local representative to find out more.

KEY PARAMETERS

I_{ac}	(max)	3800A
V_{ac}		415V
P	(max)	2700kVA

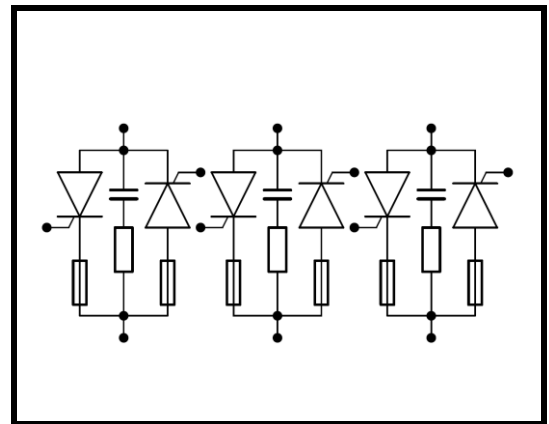
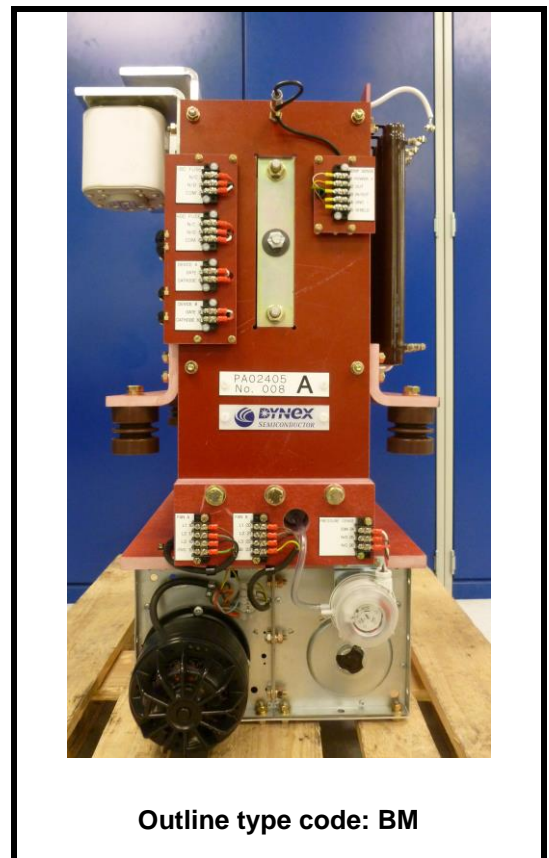


Fig. 1 Circuit configuration



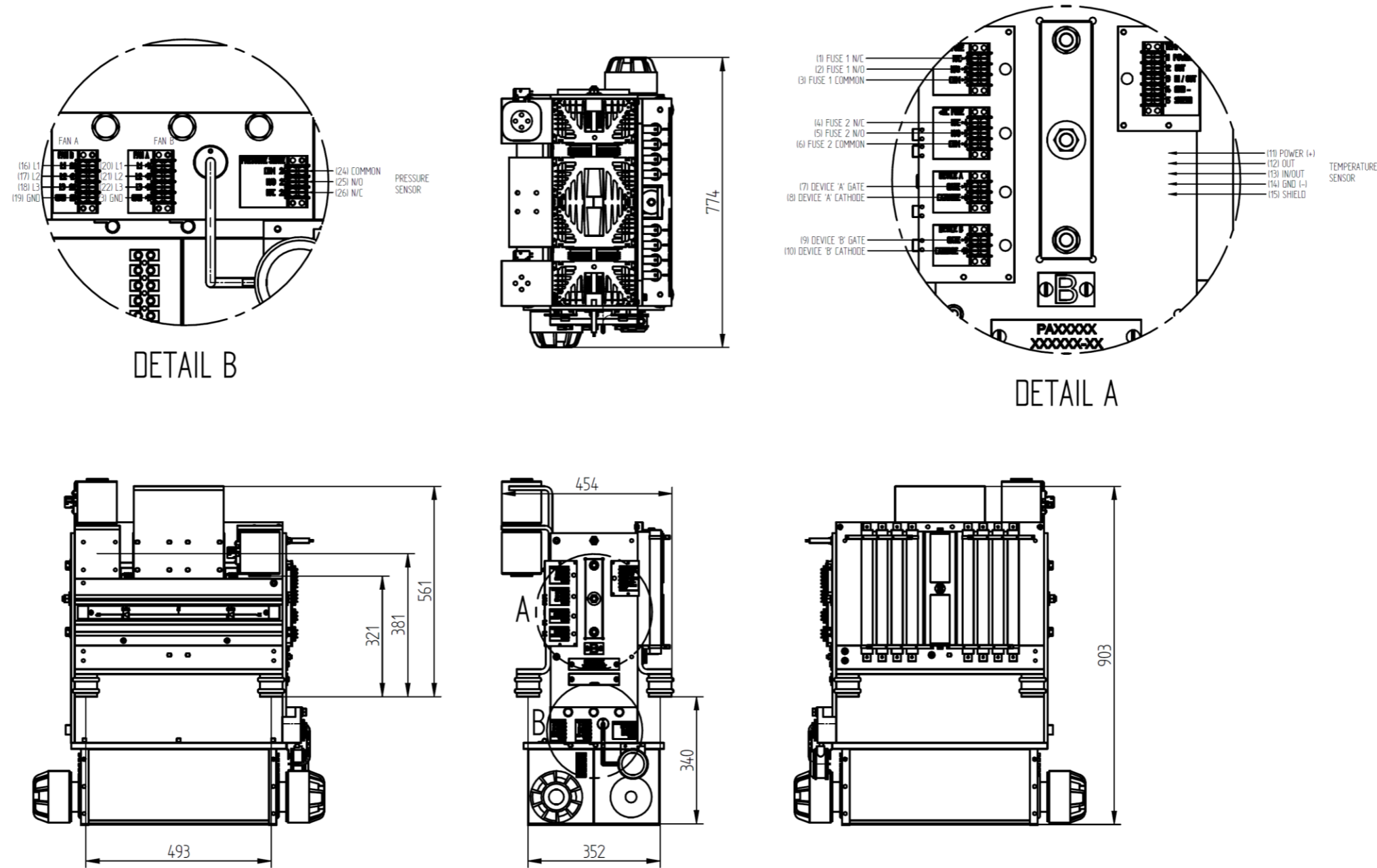
Outline type code: BM

**Fig. 2 Package
(Image shows 1 phase)**

Symbol	Parameter	Min.	Typ.	Max.	Units
	Electrical Characteristics				
I_{ac}	AC Current Continuous (50 Hz) - $T_{Air Inlet} = 40^{\circ}C$			3800	A
V_{AC}			415		V
P_{Total}				2700	kVA
V_{ISO}	50Hz 1min			7.5	kV_{ac}
	Mechanical/Environmental				
Weight	Per phase		145		Kg
PD	Pollution Degree (EN 50178)		2		
	Fan Noise		83		dB
IP	Ingress Protection (EN 60529)		00		
	Pressure Switch Aux Contact Current (230 V_{ac})			0.5	A
	Fan Data				
V_{Fan}	Fan voltage		415		V
f_{Fan}	Fan Frequency		50/60		Hz
P_{Fan}	Fan Power (2 per phase)		670		W
	Snubber – per Thyristor				
R	($P_{Max} - 300W$)		68		Ω
C			0.5		μF

PACKAGE DETAILS

For further package information, please visit our website or contact Customer Services.
All dimensions in mm, unless stated otherwise.
DO NOT SCALE.



Nominal Weight: 145kg

Module Outline Type Code: BM

Fig. 3 Outline drawing of one Phase Arm (3 assemblies required per 3 Phase switch)