

MA31750

1. ARCHITECTURE

The Dynex Semiconductor MA31750 Microprocessor is a high performance implementation of the MIL-STD-1750A (Notice 1) Instruction Set Architecture. Figure 1 depicts the architectural details of the chip. Two key features of this architecture which contribute to the overall high performance of the MA31750 are a 32-bit shift network and a 24-bit parallel multiplier. These sub-systems allow the MA31750 to perform multi-bit shifts, multiplications, divisions and normalisations in a fraction of the clock cycles required on machines not having such resources. This is especially true of floating-point operations, in which the MA31750 excels. Such operations constitute a large proportion of the Digital Avionics Instruction Set (DAIS) mix and generally a high percentage of many signal processing algorithms, therefore having a significant impact on system performance.

Key features include:

- 1) A three-bus (R, S, and Y) datapath consisting of an arithmetic/logic unit (ALU), three-port register file, shift network, parallel multiplier and flags block;
- 2) Four instruction fetch registers C0, C1, IA, and IB;
- 3) Two operand transfer registers DI, and DO;
- 4) Two address registers IC and A;
- 5) A state sequencer;
- 6) Micro-instruction decode logic.

The relationship between these functional blocks is shown in Figure 1.

2. ADDITIONAL FEATURES

The MA31750 may be operated in one of two basic user selectable modes. 1750A mode follows the requirements of MIL-STD-1750A (Notice 1) and implements all of the mandatory features of this standard. In addition, many of the optional features such as interval timers A and B, a watchdog timer and parity checking are included. 1750B mode, when selected, allows the user access to a range of new instructions and features as described in the Draft MIL-STD-1750B, Option 2. These include a range of unsigned arithmetic operations and expanded addressing support instructions.

2.1. MIL-STD-1750 OPTIONAL FEATURES

In addition to implementing all of the required features of MIL-STD-1750A and the Draft standard MIL-STD-1750B, the MA31750 also incorporates a number of optional features. Interval timers A and B as well as a trigger-go counter are provided. Most specified XIO commands are decoded directly on the chip and an additional set of commands, associated with MMU and BPU operations, are also decoded on chip.

2.2. BUS ARBITRATION

The MA31750 has a number of extra control lines to allow its use in a system utilising multiple processors. A bus request and grant system coupled with external arbitration logic allows common data and address buses to be used between devices. A lock request pin is also provided to allow the processor to maintain control of the buses when modifying areas of shared memory.

2.3. MEMORY BLOCK PROTECTION

The basic MMU function allows write or execute protection to be applied on 4KWord block boundaries. This may be further resolved to 1KWord blocks by the inclusion of a Block Protect Unit (BPU). The MA31751 can act as both an MMU and a BPU in 1750A mode, operating with the full compliment of 1MWord of memory. It will also support expansion to 8MWord in accordance with Draft MIL-STD-1750B.

3. MODES OF OPERATION

MA31750 operating modes include: (1) initialisation, (2) instruction execution, (3) interrupt servicing, (4) fault servicing, (5) timer operations and (6) console operation.

3.1. INITIALISATION

The MA31750 executes a microcoded initialisation routine in response to a hardware reset or power-up. Figure 3 shows a cycle-by-cycle breakdown of this routine. The operations performed are dependent on the system configuration read by the processor during startup. Figure 2 summarises the resulting initialisation state.

| MA31750 | |
|-------------------------------|---------------------|
| Instruction Counter | Zero |
| Status Word | Zero |
| Fault Register Zero | Zero |
| Fault Mask Register (1750B) | All ones |
| Pending Interrupt Register | Zero |
| Interrupt Mask Register | Zero |
| General Registers | Undefined |
| Interrupts | Disabled |
| Timers A and B | Zeroed and started |
| Timer Reset Registers (1750B) | Zero |
| Trigger-Go Counter | Reset and started |
| TGON Line | High |
| Start-Up ROM | Enabled |
| DMA | Disabled |
| MMU | |
| Page Registers AL/W/E fields | Zero |
| Page Register PPA field | Logical to physical |
| BPU | |
| Memory Protect RAM | Zero (disabled) |
| Global Memory Protect | Enabled |

Figure 2: Initialization State

The last action performed by the initialisation routine is to load the instruction pipeline. Instruction fetches start at memory location zero with AS = 0, PS = 0 and PB = 0 and will be from the Start-Up ROM (SUR) if implemented. Whether BIT passes or not, the processor will begin instruction execution at this point. The system start-up code may include a routine to enable and unmask interrupts in order to detect and respond to a BIT failure if required.

| Addr | Operation |
|------|---|
| 0 | PIC initialised |
| 1 | A<-- 0x8410 |
| *2 | Read external configuration register from 8410H (CONFWN asserted low) |
| 3 | - |
| 1F | - |
| 20 | If BPU, N<-- 128 else N<-- 0 |
| 21 | Decrement N; branch to 21 if N >= 0 |
| 4 | Write internal configuration register |
| 5 | - |
| 6 | If no MMU, br to 7 |
| 13 | - |
| 14 | - |
| 15 | N <- 256 |
| 16 | Decrement N |
| *17 | Write MMU Instruction Page Register N |
| *18 | Write MMU Operand Page Register N; branch to 16 if N > 0 |
| 19 | A <- 0400H |
| 1A | N <- 16 |
| 1B | PBSR <- N |
| 1C | - |
| *1D | Write Memory control register to MMU with PB = N |
| 1E | Decrement N; branch if N >= 0 to 1B |
| 7 | A <- 0 |
| 8 | IC <- A |
| 9 | Br to BIT if required |
| A | - |
| B | Br if no SUR to 00D |
| C | - |
| D | Re-init PIC |
| E | - |
| *F | Zero SW |
| 10 | - |
| 32 | - |
| 33 | Br to 011 if BIT passed (or not run) |
| 34 | - |
| 35 | - |
| 36 | Set FT bit 13 |
| 11 | Init DMAE, SUREN, NPU |
| 12 | - |
| *3F8 | Fetch first word from 0 |
| *3F9 | Fetch second word from 1 First instruction first cycle |

* Indicates an external cycle

Figure 3: Initialization Sequence

MA31750

3.1.1. CONFIGURATION REGISTER

The system configuration register allows the MA31750 to function with a variety of different system designs. Implemented features such as a BPU should be indicated as present by setting bits in an externally-implemented 16-bit latch - see figure 4 for bit assignments. The latch must be placed in IO space at the address defined by XIO RCW (8410) shown in the table of XIO commands, Figure 20c. The processor decodes this command internally and produces a discrete output signal CONFVN which may be used as the external register Output Enable control.

| Bit | Function |
|-------|---|
| 0 | MMU Select 0 |
| 1 | BPU Select 0 |
| 2 | 1 = Console operation enabled |
| 3 | MMU Select 1 |
| 4 | Interrupt sensitivity (1 = level, 0 = edge) |
| 5 | MMU Select 2 |
| 6 | Parity sense (1 = odd, 0 = even) |
| 7 | 1= BIT on power-up |
| 8 | 1 = Start-Up ROM present |
| 9 | 1 = DMA device present |
| 10 | 1=1750A mode, 0=1750B mode |
| 11 | 1=Instruction set expansion enabled |
| 12 | BPU Select 1 |
| 13 | BPU Select 2 |
| 14-15 | Reserved for future expansion |

Figure 4: Configuration Word Bits

The processor maintains an internal configuration register which is updated from the external register during initialisation and during the execution of a NOP/BPT (No-op/Breakpoint) instruction. The internal configuration register is used to control the CPU. Note that although the external register can be read using XIO RCW, this does not affect the internal configuration. Note: if the interrupt level/edge trigger select bit - (bit 4) is changed in the internal register during normal operation of the device, one or more spurious interrupts may occur.

When in 1750B mode, the processor needs to know how many Page Banks are implemented in the external system so that Status Word changes can be protected properly. MIL-STD-1750B allows the options 0,1,2,4,8 or 16. The actual selection should be coded into the three configuration register bits MMU0, MMU1 and MMU2 as shown in figure 5.

In 1750A mode, setting any of the MMU select bits indicates the presence of an MMU, the actual code is unimportant in this mode.

BPU selects bits 2:0 should be set to indicate how much BPU-protected memory exists on the system. If no BPU is present, all three bits should be zero.

| Selected bit | | | Function |
|--------------|------|------|------------------------|
| MMU2 | MMU1 | MMU0 | |
| 0 | 0 | 0 | No MMU in system |
| 0 | 0 | 1 | 1 Page Bank (PB0) |
| 0 | 1 | 0 | 2 Page Banks (PB0-1) |
| 0 | 1 | 1 | 4 Page Banks (PB0-3) |
| 1 | 0 | 0 | 8 Page Banks (PB0-7) |
| 1 | 0 | 1 | 16 Page Banks (PB0-15) |
| 1 | 1 | X | 16 Page Banks (PB0-15) |

Note: In 1750A mode, setting any or all of the MMU select bits indicates the presence of an MMU.

Figure 5: MMU Selection Bits

3.1.2. BUILT-IN TEST (BIT)

BIT consists of ten subroutines, as outlined in Figure 6. If all ten subroutines execute successfully, or no BIT is selected in the configuration word, a BIT pass is flagged (seen externally as NPU raised high by the initialization routine). If any part of BIT fails, a corresponding bit identifying the failed subroutine is set in General Register R0, Fault Bit 13 is set in the Fault register (FT) and NPU is left in the low state. Figure 6 defines the coding of BIT results in R0. In the event of such a failure, the resulting processor reset state will be dependent on where in BIT the error occurred and may not be the same as that shown in figure 2. A BIT failure indication in FT will set the level 1 interrupt request bit of the Pending Interrupt (PI) register. Since initialisation disables and masks interrupts, this interrupt request will not be asserted. Any external interrupts or faults occurring during BIT will be cleared before program execution begins and will not be serviced.

| Test Coverage | Machine Cycles | Bit set on fail |
|---|----------------|-----------------|
| Temporary Registers (T0-T11) | 47 | 7 |
| General Registers (R0-R15) | 79 | 7 |
| Flags Block | 18 | 8 |
| Sequencer Operation and ROM checksum | 5632 | 9 |
| Divide routine Quotient Shift Network | 12 | 10 |
| Multiplier and ALU | 13 | 11 |
| Barrel shift Network | 13 | 12 |
| Interrupts and fault handling and detection | 17 | 13 |
| Address generator block | 13 | 14 |
| Instruction pipeline | 15 | 15 |

Note: BIT pass is indicated by all zeros in FT bits 13,14, and 15

Figure 6: Built-In Test Coverage

3.2. INSTRUCTION EXECUTION

Once initialisation has been completed, the processor will begin instruction execution. Instruction execution is characterised by a variety of operations, each is one machine cycle in duration (two or more system CLK periods). Depending on the instruction being executed at the time, these operations include: (1) internal CPU cycles, (2) instruction fetches, (3) operand transfers, and (4) input/output transfers.

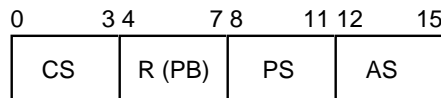
Instruction execution may be interrupted at the end of any individual machine cycle by an interrupt or Console request. Internal cycles are always two CLK periods long, whilst the other cycle types are a minimum of two CLK periods - extendable by inserting waitstates. In all cycles except internal cycles, RDN, WRN, DSN and AS strobes are produced to control the transfer and latching of data and address around the system.

| Cycle Type | RD/WRN | O/IN | M/ION | Description |
|-------------------------------|--------|--------|--------|--|
| Internal Cycle | H | L | H | Used to perform all CPU data manipulation operations where bus activity is not required. |
| Instruction Fetch | H | L | H | Used to keep the instruction pipeline full with instructions and/or their postwords. At least one instruction is always ready for execution when the preceding instruction is completed. During jump and branch instruction execution the pipeline is refilled by two consecutive instruction fetches starting at the new instruction location. It is also refilled as part of interrupt request processing. |
| Operand Read Operand Write | H L | H H | H H | Used to read in data from the external system and to write results to the system. |
| IO Read IO Write | H L | H H | L L | Input/Output transfers utilize the MIL-STD-1750 XIO and VIO instructions. RD/WN defines the direction of the transfer. IO transfers may be divided into three groups; those commands which are implemented internally by the CPU, those commands which are implemented by external system hardware and those commands defined as illegal by MIL-STD-1750A and B. |

Figure 7: External Cycle Types

3.3. IO OPERATION

The MA31750 supports a 64KWord addressing space dedicated to IO control and communication in accordance with MIL-STD-1750. The control line MION is asserted low when accessing IO space (see figure 7 above for other strobe states). One of the two commands XIO or VIO is used to specify both data for the transfer and the port address (referred to as an XIO Command in 1750). The CPU contains logic which decodes all internally supported XIO commands and generates the control signals necessary to carry out the commanded action. In addition, the validity of a command not implemented internally is verified. Figure 20c identifies the XIO commands which are internally supported by the MA31750.



3.4. INTERRUPT AND FAULT HANDLING

3.4.1. STATUS WORD (SW)

Figure 8 depicts the status register format. This 16-bit word is divided into four, 4-bit sections. Three of these sections [AS, PS and, (1750B mode) PB] are control bits for implementing expanded memory with an external MMU. The fourth section, CS, is used to hold the carry, positive, zero and negative condition flags set by the result of the previous arithmetic operation.

| Field | Bits | Description |
|---------|------------------|---|
| CS | 0 1 2 3 | CONDITION STATUS C- Carry from an addition or no borrow from a subtraction. P- Result > 0 Z- Result = 0 N- Result < 0 |
| R PB | 4-7 | RESERVED (=0) in 1750A mode Page Bank Select in 1750B mode |
| PS | 8-11 | PROCESSOR STATE: (a)- Memory access to key code (b)- Priviledged instruction enable |
| AS | 12-15 | ADDRESS STATE: Page register sets for expanded memory addressing. |

Figure 8: Status Word Format

MA31750

The AS field is used during expanded memory access to define the page register set to be used for instruction and operand memory references. The PS field is used during memory protect operations to define the access key used for memory accesses. The PS field is also used during execution of privileged Instructions - PS must be zero for such operations to be legal. See Section 4.3 for further information on the use of this field. The PB field is used in conjunction with the AS field in 1750B mode to expand the number of page registers available. Note that attempting to set AS or PB to a non-zero value with no MMU, or setting PB to a non-zero value in 1750A mode is illegal. This will be aborted and a fault 11 will be generated (SW will remain unchanged).

3.4.2. PENDING INTERRUPT REGISTER (PI)

This 16-bit register is used to capture and hold interrupts until they can be processed by microcode and user software. A logic 1 is used to represent an active pending interrupt. The PI register supports three dedicated external, six user-definable external, and seven dedicated internal interrupts. Level-sensitive interrupts are sampled on each rising CLK edge, whilst edge sensitive interrupts are captured immediately.

| System Interrupts | Internal Interrupts |
|-------------------|---|
| PWRD | 0 (Cannot be disabled or masked) |
| | 1 Machine Error (Cannot be disabled) |
| INT02 | 2 |
| | 3 Floating-Point Overflow |
| | 4 Fixed-Point Overflow |
| | 5 Executive call (Cannot be disabled or masked) |
| | 6 Floating-Point Underflow |
| | 7 Timer A Overflow |
| INT08 | 8 |
| | 9 Timer B Overflow |
| INT10 | 10 |
| INT11 | 11 |
| IOI1 | 12 |
| INT13 | 13 |
| IOI2 | 14 |
| INT15 | 15 |

Figure 9: Pending Interrupt Bit Assignments

| System Faults | Internal Faults |
|-----------------------------------|--------------------------------|
| MPROE (CPU) | 0 |
| MPROE (DMA) | 1 |
| PE (CPU memory) | 2 |
| PE (CPU IO) | 3 |
| PE (DMA) | 4 |
| EXADE or Bus Timeout (CPU IO) | 5 |
| | 6 Parallel IO Transfer Error |
| FLT7 | 7 |
| EXADE or Bus Timeout (CPU memory) | 8 |
| | 9 Illegal Instruction Opcode |
| | 10 Privileged Instruction |
| | 11 Unimplemented Address State |
| Reserved | 12 |
| SYSF | 13 MA31750 BIT Fail |
| EXADE (DMA) | 14 |
| SYSF | 15 |

Figure 10: Fault Register Bit Assignments

3.4.3. MASK REGISTER (MK)

This 16-bit register is used to store the interrupt mask. Interrupts are masked by ANDing each mask bit with its corresponding PI register bit. ie. A logic zero in a given bit position indicates that the corresponding bit in the PI register will be masked. Interrupts which are masked will be captured in the PI register but will not be acted on until unmasked. Interrupt level zero can not be masked.

3.4.4. PRIORITY ENCODER

This encoder generates an interrupt request to the sequencer block whenever one or more unmasked interrupts are pending and enabled in the PI. The highest priority unmasked pending interrupt is encoded as a 4-bit vector. This vector is used during interrupt servicing in order to create the interrupt linkage and service pointers.

3.4.5. FAULT REGISTER (FT)

This 16-bit register is used to capture and hold both internal and user implemented external faults using positive logic, i.e., a logic one represents a fault. Bus cycle faults are captured at the end of each machine cycle whilst the two general purpose faults SYSFN and FLT7N are set when the low time exceeds the minimum pulse width. Setting any one or more faults in FT will cause a level 1 (machine error) interrupt request. Once a fault is set in FT, it may only be cleared via an XIO command.

In 1750B mode, a fault mask register is provided to allow selective masking of fault conditions. Section 4 (Software Considerations) contains further information. Figure 27 shows the fault register assignments.

3.4.6. MEMORY FAULT PAGE AND ADDRESS REGISTERS

These registers capture the page and address information at the end of each external cycle until a memory fault occurs. Faults setting bits 0, 1, 2 and 8 in the fault register cause the registers to stop latching new address information, so retaining information about the address at which the fault occurred. The registers can be read (using the GPS defined XIOs RMFP and RMPA). The fault register must be cleared and both memory fault registers read before latching can restart.

The information stored in the memory fault registers is as follows:

| | | | |
|-------------------------------|-----------------------------------|---------------------------------------|------------------------|
| MFPR[0:3] A[0:3] | MFPR[4:7] PB[0:3](ASOB) | MFPR[8:10] Res | MFPR[11] ION |
| MFPR[12:15] AS[0:3] | MFAR[0:15] A[0:15] | Note: MFPR[11] is the inverse of OIN. | |

These registers are only available if there is an MMU in the system. If there is no MMU present, then the RMFP and RMFA XIO commands become illegal.

The address information held in these registers can be used to restart code after a memory fault has occurred. Bits [6:7] of the OAS register store information on the type of instruction which was being executed when the fault occurred:

- 00 → branch that was taken
- 01 → single word instruction
- 10 → double word instruction

(Subtracting this value from the saved address will give the address of the failed instruction unless it was a branch that was taken).

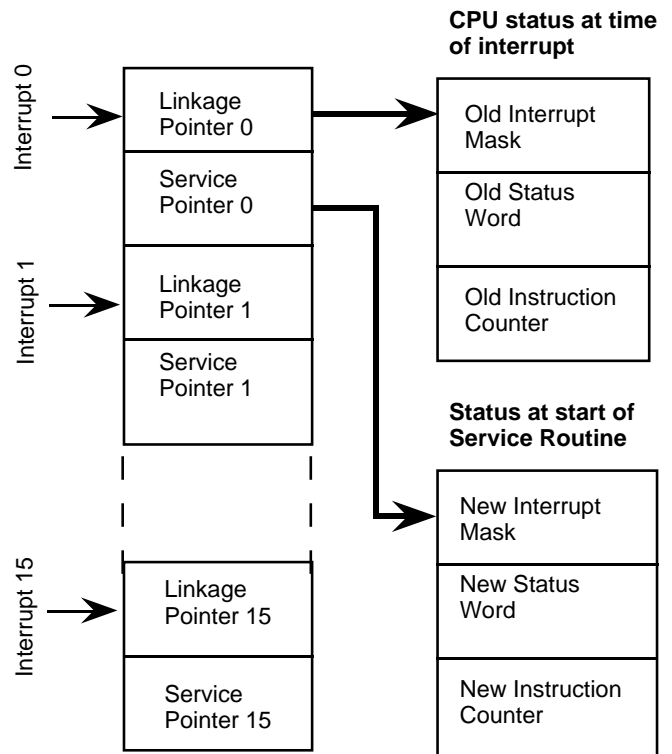


Figure 11: Interrupt Vectoring

3.4.7. INTERRUPT SERVICING

Nine user interrupt request inputs are provided for programmed response to asynchronous system events. A low on any of these inputs will be detected at the rising edge of CLK (level sensitive interrupts only) and latched into the Pending Interrupt (PI) register on the falling edge of CLK at the end of the current CPU cycle. This sequence occurs whether interrupts are enabled or disabled or whether the specific interrupt is masked or unmasked. More details of interrupt operations are available in Applications Note 4.

All of the user interrupts PWRDN, INT02N - INT15N may be programmed to be either level or edge sensitive by setting or clearing the appropriate bit in the system configuration register. If edge sensitivity is selected then an interrupt request input must return to the high state before a subsequent request on that input will be detected. If level sensitivity is selected then holding an interrupt input low will cause a new interrupt to be latched following each service. Note that interrupts IOI1N and IOI2N are level sensitive only.

In order that the system may recognise when a service has been started, an interrupt acknowledge pin is provided. During the microcoded interrupt service routine execution, the processor will read the Linkage Pointer address in memory. During this operand read cycle, the processor will also assert INTAKN low, which may be used in conjunction with AS and address bus bits A[11:14] to reveal the priority level of the interrupt being serviced. (A[11:14] = 0 indicates level 0 interrupt, A[11:14] = 1 indicates level 1 interrupt, and so on). INTAKN should also be used to remove level-sensitive interrupt requests to ensure that repeated requests are not generated.

| | Interrupt No. | LP Address | SP Address |
|----------|---------------|------------|------------|
| PWRD | 0 | 20 | 21 |
| ME | 1 | 22 | 23 |
| INT02 | 2 | 24 | 25 |
| Fl.P o/f | 3 | 26 | 27 |
| Fx.P o/f | 4 | 28 | 29 |
| BEX | 5 | 2A | 2B |
| Fl.P u/f | 6 | 2C | 2D |
| Timer A | 7 | 2E | 2F |
| INT08 | 8 | 30 | 31 |
| Timer B | 9 | 32 | 33 |
| INT10 | 10 | 34 | 35 |
| INT11 | 11 | 36 | 37 |
| IO11 | 12 | 38 | 39 |
| INT13 | 13 | 3A | 3B |
| IO12 | 14 | 3C | 3D |
| INT15 | 15 | 3E | 3F |

Note: Addresses (in hex) are in operand space

Figure 12: Interrupt Pointer Address

When an interrupt request is latched into PI, it is ANDed with its corresponding mask bit in the mask register (MK). NOTE: Interrupt level 0 is non-maskable. Any unmasked pending interrupts are output to the priority encoder where the highest priority is encoded as a 4-bit vector. If interrupts are enabled and an unmasked interrupt is pending, the priority encoder will assert an interrupt request to the sequencer. 1 or 2 extra CLKs will be inserted into the machine cycle on which the interrupt request is asserted.

Upon completing execution of each MIL-STD-1750A or B instruction, the sequencer checks the state of the priority encoder interrupt request. If a request is asserted, the sequencer branches to the microcode interrupt service routine. This routine reads the 4-bit pending interrupt vector and then uses this value to calculate the appropriate interrupt linkage (old processor context save area) and service (new context load area) pointers. Figure 11 depicts this relationship. Figure 12 defines the pointer values.

Using the linkage and service pointers, the microcode interrupt service routine performs the following: (1) the current contents of the status word, mask register, and instruction counter are saved; (2) a write status word (WSW) I/O command is executed with an all zero data word; (3) the new mask is loaded into MK and interrupts are disabled; (4) the new status word is read and checked for a valid Address State (AS[0:3]) field - If the address state is non-zero and an MMU is not present, AS[0:3] is set to zero and fault 11 (address state error) is set in the fault register FT); (5) a write status word command using the new status word is performed; and (6) the new IC value is loaded into IC, the instruction pipeline is flushed and refilled starting at the new address, and instruction execution begins.

[NOTE: The steps listed above represent a summary of actions performed during interrupt servicing and do not necessarily reflect the actual order in which these events take place.]

If an address state fault occurs during the service routine, interrupt level 1 will be set. This interrupt will be serviced when interrupts are re-enabled unless it is masked by the new value in MK.

3.4.8. FAULT SERVICING

Five user fault inputs are provided. A low on any of the three bus-cycle-related fault inputs, EXADEN, MPROEN or PEN, will be latched into the Fault Register (FT) on the next falling edge of AS. A low on either of the two general purpose fault inputs, FLT7N or SYSFN, will be latched immediately and will be sampled into the appropriate bit of FT on the falling edge of AS.

Any fault which sets a bit in the FT immediately causes a level 1 pending interrupt to be entered into the PI register. This interrupt is maskable but may not be disabled.

This interrupt will be serviced at the end of the currently executing 1750 instruction if not masked. The microcoded interrupt service routine reads the interrupt priority vector and clears the bit relating to the serviced interrupt from the PI. However, the FT retains the set fault bits until the FT is cleared using the XIO RCFR command. (A non-destructive read of the FT is provided by the XIO RFR command.) Anti-repeat logic between the FT and the PI prevents the same fault being latched and serviced twice. However, as all FT bits are ORed together and input to PI bit 1, this also prevents any other faults being serviced until the fault register has been cleared. It is imperative, therefore, that the fault service routine executes a RCFR XIO before exiting. Different types of faults are serviced slightly differently as follows:

3.4.8.1. MPROEN and EXADEN

If MPROEN and/or EXADEN are low on a falling clock edge with AS and DSN high (see figure 23a), the processor will wait in this state. If either fault input remains low during two falling edges of TCLK, the cycle is forced to complete but RDN/WRN and DSN are inhibited (see figure 24b). This allows the processor to prevent erroneous accesses. An access fault will be registered as AS falls at the end of the cycle.

3.4.8.2. PEN

External parity errors are latched into the FT on the falling edge of AS. The fault bit set is dependant upon the type of transfer taking place (memory, IO or DMA).

3.4.8.3. FLT7N and SYSFN

These faults are latched immediately, but are not sampled into the fault register until the following falling edge of AS.

3.4.9. PARITY GENERATION AND CHECKING

The MA31750 features on-chip parity generation and checking on all data bus transfers. Data generated by the processor has a parity bit attached to it to allow external logic to verify write transfers. On read transfers, the processor will check the incoming parity (if enabled) and will generate the appropriate parity error fault if detected. However, the data to be checked is only available as DSN rises at the end of the cycle so the error flag is generated and latched in the cycle following the erroneous cycle. Parity checking may be

disabled when operating with devices which do not support parity generation by asserting the DPARN (Disable Parity) input low. The checking polarity (odd or even) is selectable with Configuration Register bit 6.

3.5. TIMER OPERATIONS

The MA31750 implements interval timers A and B, a trigger-go counter, and a bus fault timer. A discussion of each follows:

3.5.1. TIMERS A AND B

Two general-purpose, 16-bit timers are provided in the processor. Timer A is clocked by the TCLK input; timer B is clocked by an internally generated TCLK/10. The divider circuit is reset when Timer B is reset to give deterministic processor operation. MIL-STD-1750 requires TCLK to be a 100kHz pulse train. If allowed to overflow, timers A and B will set level 7 and level 9 interrupt requests respectively. Each timer can be read, loaded, started and stopped by using XIO commands as identified in figure 20c.

Each timer has associated with it a reset register from which the timer is automatically loaded following a software reset or overflow. These registers are initially loaded with zero but may be reloaded from software (using the XIO instructions OTA and OTB) to provide greater control over the count period.

The MA31750 timers A and B will be disabled when the device enters Console mode, as required by MIL-STD-1750A Notice 1.

3.5.2. TRIGGER-GO COUNTER

This 16-bit counter is clocked by the TCLK input and is typically used as a system "watchdog" timer. It is enabled during system initialisation and may be preset under software control to give a wide range of timeout intervals. In order that the count period may be controlled, a reset register is provided. On reset, this register is loaded with zero, but can be reloaded under software control to take any value between 0 and $FFFF_{16}$ (a value of zero gives the maximum count period). This allows the timeout period to be varied between 20 μ s and 0.65s. Note that there is no value which disables the timer.

The counter is incremented on each TCLK falling edge. Whenever the trigger-go counter overflows, TGON drops low and remains low until the counter is reloaded from the reset register via the GO internal XIO command. TGON low would typically be used to initiate a user-defined system recovery action such as a system reset.

3.5.3. BUS FAULT TIMER

All bus operations are monitored to ensure timely completion. A hardware timeout circuit is enabled at the start of each memory and I/O transfer (DSN high-to-low transition) and is reset upon receipt of the external ready (RDYN) signal. If this circuit fails to reset within a minimum of one TCLK period or a maximum of two TCLK periods, either bit 8 (if the transaction is with memory) or bit 5 (if the transaction is with I/O) of the Fault Register (FT) is set. This sets Pending Interrupt level 1 and causes the strobes to be suppressed and the current bus cycle to be aborted. The MIL-STD-1750 instruction is aborted, and control passes to the level 1 interrupt service routine (if the level 1 interrupt is unmasked). The timeout mechanism is disabled and reset if DTON is asserted low.

3.6. CONSOLE OPERATION

The MA31750 is capable of interfacing directly to an external console, allowing the developer to: examine and change the contents of internal registers, memory and IO devices; single step code and halt the processor. Applications Note 3 provides a full description of the Console interface, its implementation and operation.

3.7. MULTIPROCESSOR SUPPORT

Once initialisation has been completed, the processor will begin instruction execution by executing a sequence of micro-instructions, each one machine cycle (two system clock periods) long. Each machine cycle may perform either an internal or an external operation; if the operation is purely internal then the system busses will not be in use and may be reassigned to another processor.

An external machine cycle (indicated by REQN low during the second half of the previous cycle) will cause the processor to stall upon completion of the current microcycle, awaiting GRANTN asserted low. Whilst GRANTN is high the busses remain undriven.

In simple, single processor systems which use no DMA devices the GRANTN line should be tied to GND to allow the processor to retain control of the busses. The LOCKN and REQN pins can be left open-circuit in this case. Applications Note 11 provides further information for designers of systems with more than one bus master.

4. SOFTWARE CONSIDERATIONS

4.1. OPERATING MODES

The MA31750 is capable of being operated in one of two basic modes as previously mentioned. These are described in detail below:

4.1.1 1750A MODE

1750A mode is a full implementation of MIL-STD-1750A (Notice 1) and includes some of the optional features mentioned in this standard.

4.1.2 1750B MODE

1750B mode is an implementation of the proposed MIL-STD-1750B, Option 2, Draft of 17th July 1988. This mode extends the basic 1750A mode operation. Note that the transcendental functions SIN, COS, LN etc. (Option 3 of MIL-STD-1750B) are not supported. Features new to MIL-STD-1750B which are in violation of MIL-STD-1750A are only enabled in 1750B mode. The additional instructions available in 1750B mode are detailed in figure 20b.

4.2. ACCESSING IO USING XIO AND VIO COMMANDS

MIL-STD-1750 defines a 64KWord addressing space which is available exclusively for accessing IO resources. Two special commands, XIO and VIO, are provided as part of the instruction set for accessing this space. Port addresses are specified as a 16-bit Command word which is supplied as a parameter to the XIO/VIO instruction. The MSB of the Command word indicates the direction of data transfer between the port and the register specified in the XIO command (a 1 in the MSB indicates that the port is being read, whilst 0 indicates a write to the port).

| Output | Input | Usage |
|-----------|-----------|------------------------------------|
| 0000-03FF | 8000-83FF | PIO |
| 0400-1FFF | 8400-9FFF | Spare |
| 2000-20FF | A000-A0FF | CPU and auxiliary register control |
| 2100-2FFF | A100-AFFF | Reserved |
| 3000-3FFF | B000-BFFF | Spare |
| 4000-40FF | C000-CFFF | CPU and auxiliary register control |
| 4100-4CFF | C100-CCFF | Reserved |
| 4D00-4FFF | CD00-CFFF | Extended memory protect RAM |
| 5000-50FF | D000-D0FF | Memory protect RAM |
| 5100-51FF | D100-D1FF | MMU Instruction Page Registers |
| 5200-52FF | D200-D2FF | MMU Operand Page Registers |
| 5300-7FFF | D300-FFFF | Spare |

Figure 13: XIO Command Channel Grouping

XIO command addresses are grouped by the Standard according to function. Certain groups are 'reserved' and must not be implemented. Attempts to read or write these areas will be prevented by the processor and a fault will be logged in the fault register. Other groups are designated 'spare' and may be implemented as required by the system designer. Note, however, that there is a third group which access system resources such as MMU page registers and interrupt control registers which are not available to the user to implement. A summary of the XIO map is provided in figure 13, whilst the detailed list of implemented command addresses is shown in Figure 20c.

The VIO (Vectored IO) command allows a number of IO operations to be executed in a sequence from a table. Applications Note 8 gives further information on the use of this command.

Both XIO and VIO are priveleged commands and as such can only be executed when the Status Word PS field is zero.

4.3. PROCESSOR STATE AND PRIVILEGED INSTRUCTIONS

The Processor State is defined by a 4-bit value held in the processor Status Word. If the value is made non-zero then attempts to execute the commands XIO, VIO or LST will be aborted and a fault will be raised. This is intended to deny direct access to the hardware from user applications (running in PS≠0), whilst allowing the Operating System (operating with PS=0) access to the system IO and interrupt resources.

If an MMU is present on the system the PS field is used in conjunction with the page register Access Key field to provide a further level of protection to the system. When PS=0 access is granted to all pages, irrespective of their key value. If PS is non-zero, access is only permitted if the Access Key is equal to the PS value, or the Access Key is 15. Access Key 15 should be applied to a shared area of code or data, and is accessible to all PS values.

4.4. USING START-UP ROM

The transition between code execution from Start-up ROM and system RAM must be made with care. If a system overlays RAM with the Start-Up ROM and the transition is made by simply executing XIO DSUR from the ROM, then the instruction pipeline will contain the value stored in the ROM location immediately following the XIO DSUR command. This value will be treated as an instruction and the processor will attempt to execute it. In such cases, it is recommended that DSUR be followed by an unconditional branch instruction with offset, i.e. the BR instruction. An alternative approach is simply to jump to a portion of RAM not overlaid by the Start-Up ROM and execute DSUR from RAM.

4.5. USING SOFTWARE TIMERS A AND B

The MA31750 implements the two software timers, A and B as defined in the MIL-STD 1750A specification. These are general purpose timers which are clocked at 100kHz and 10kHz respectively, giving clock 'tick' intervals of 10us and 100us respectively. They may be started using the XIO TAS and XIO TBS instructions, and stopped using XIO TAH and XIO TBH. If a timer is allowed to overflow (FFFF₁₆ - 0000₁₆) it will generate pending interrupt levels 7 (A) or 9 (B).

In 1750B mode each timer has associated with it a reset register which may be loaded with any 16-bit value from software. If a timer is allowed to overflow, an automatic reset will take place which will reload the timer with the value held in its on-chip reset register, provided that the timer had previously been loaded using XIO OTA/OTB. If this is not the case, then the timers will reset to zero on overflow. Each of the reset registers is initialised to zero but may be changed using XIO OTAR or XIO OTBR.

4.6. FAULT MASK REGISTER

A fault mask register is accessible in 1750B mode. Its function is similar to that of the Interrupt Mask register and allows selective enabling and disabling of all bits in the Fault Register. All faults are maskable. Setting a bit in this register allows the corresponding fault bit to be seen by the system. The mask register is loaded with FFFF₁₆ on initialisation.

4.7. GENERAL REGISTERS R0-R15

There are 16 general purpose registers defined by MIL-STD-1750; each is 16-bits wide. Adjacent registers may be concatenated to provide storage for the larger data formats (Double Integer and Float - 32-bit; Extended Float - 48-bit). The first register in the set stores the most significant data word and is the register specified when referring to the value. Wrap-around occurs between R15 and R0.

Although generally all registers are the same, certain registers are notionally assigned to particular tasks, see figure 15.

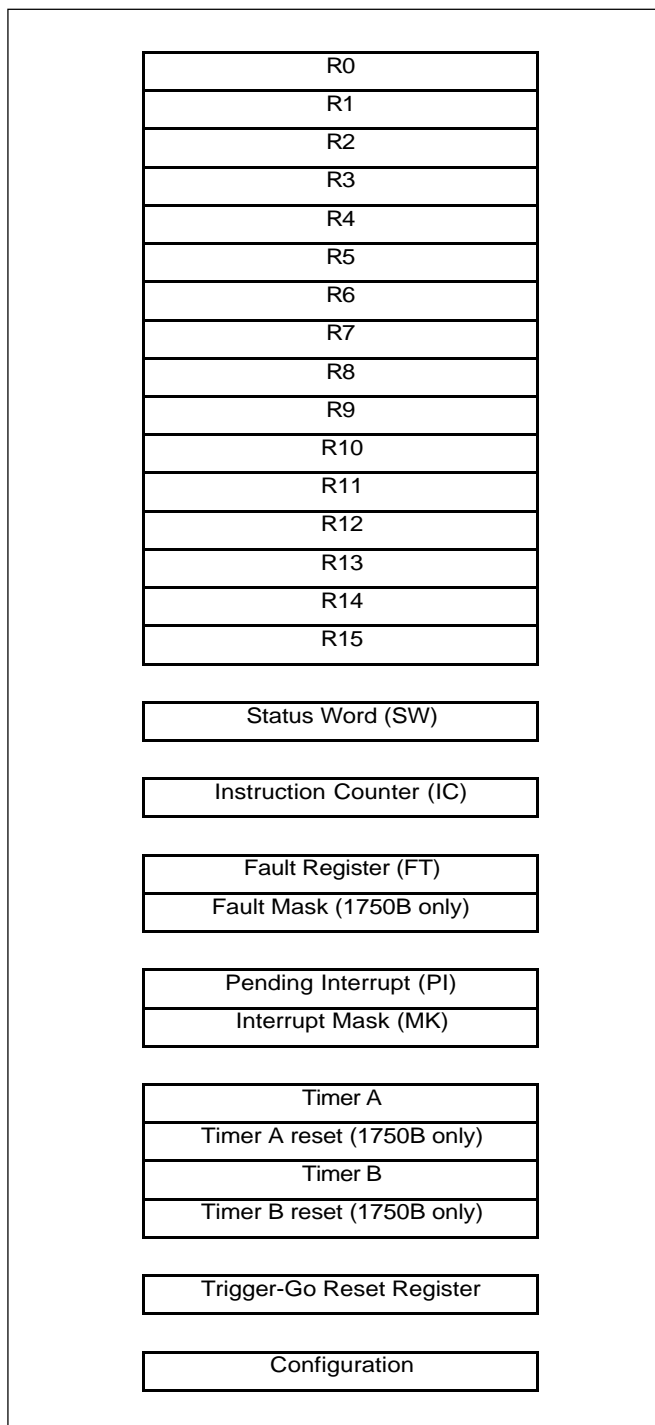


Figure 14: Register Set Model

4.8. MIL-STD-1750 DATA TYPES

The MA31750 fully supports 16-bit fixed-point single-precision, 32-bit fixed-point double-precision, 32-bit floating-point, and 48-bit extended precision floating-point data types. Figure 16 depicts the formats of these data types.

All numerical data is represented in two's complement form. Floating-point numbers are represented by a fractional two's complement mantissa with an 8-bit two's complement exponent. All floating-point operands are expected to be normalised. If not normalised, the results from an instruction are not defined.

4.9. MIL-STD-1750 ADDRESSING MODES

The MA31750 supports the eight basic addressing modes specified in MIL-STD-1750A. These addressing modes are depicted in Figure 18 and are defined below. In binary operations one operand is assumed to be in a register (specified as part of the opcode) whilst the second operand (the Derived Operand, DO) is taken from a source which is dependent upon the addressing mode, see figure 17. Many addressing modes may be specified as indexable: the index register may be any of the general purpose registers R1-R15 (if 0 is specified then the non-indexable form is used). For Base Relative addressing modes the first operand is fixed as part of the instruction (either R0 for Double Integer operations, or R2 for Single Integer operations).

4.10. MEMORY ADDRESSING CAPABILITY

In accordance with MIL-STD-1750A, the MA31750 can access a 64KWord address space directly. With the addition of a single external Dynex Semiconductor MA31751 chip, configured as a Memory Management Unit (MMU), this address space may be expanded to 1MWord (1750A mode) or 8MWord (1750B mode). The MA31751 data sheet gives further information on the MMU/BPU chip and on the memory management scheme employed. Note that whilst one MMU can be used to provide the full range of physical addresses to the system memory, the logical addressing capability may also be expanded by adding further MMU devices up to a maximum of 16.

| Register(s) | Notional Use or Restriction on Use |
|-------------|--|
| R0 | Cannot be used as an index register With R1: Implied register in Double mode Base Relative addressing |
| R2 | Implied register in Single mode Base Relative addressing |
| R3-R11 | General purpose |
| R12-R15 | Base relative registers |
| R15 | Stack pointer in PSHM and POPM operations |

Figure 15: General Register Usage

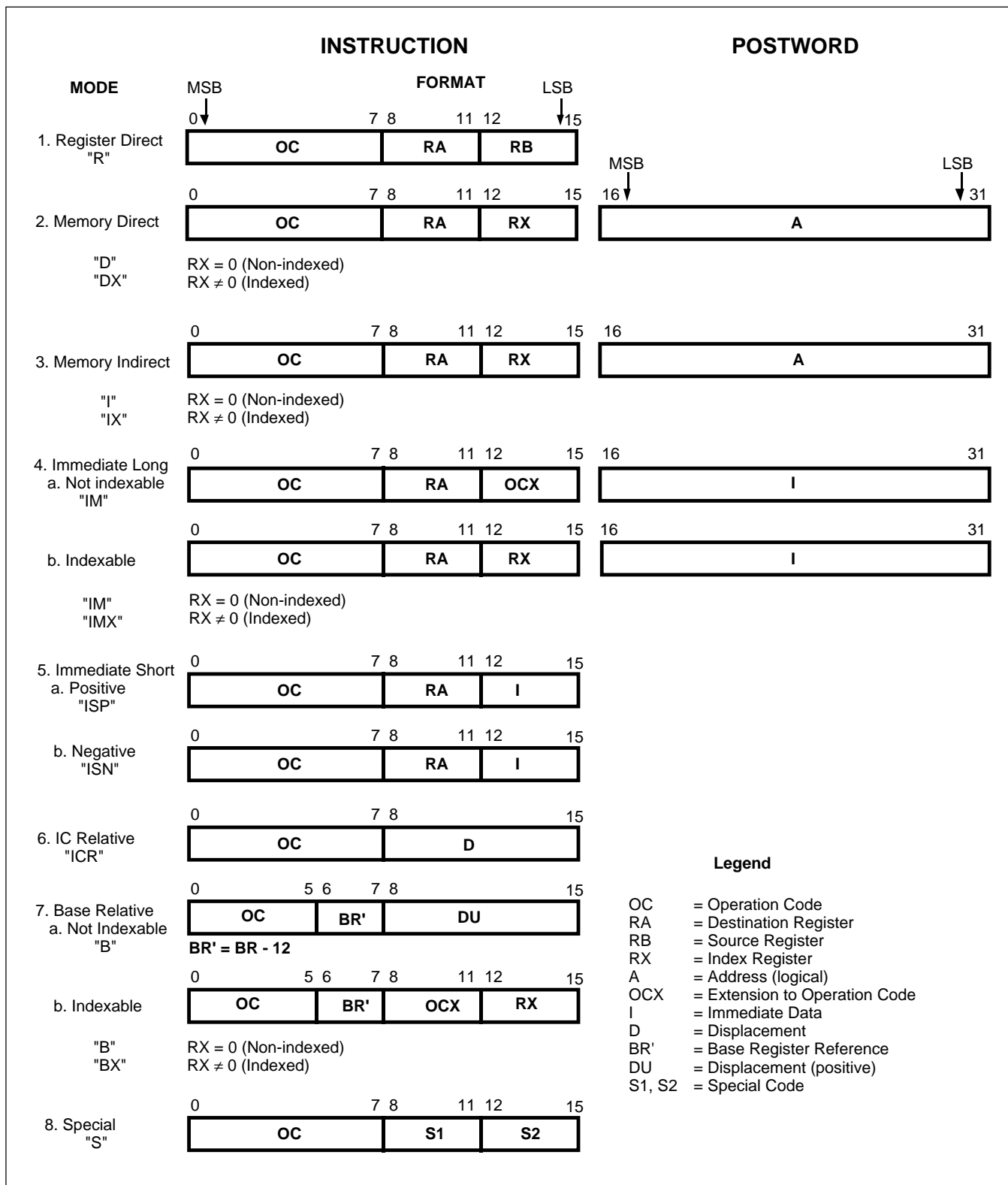


Figure 18: Addressing Modes

5. PERFORMANCE

5.1. BENCHMARKING

Figure 20a defines the number and type of machine cycles associated with each MIL-STD-1750 instruction. This information may be used when benchmarking MA31750 performance. The Digital Avionics Instruction Set (DAIS) mix, which defines a typical frequency of occurrence for MIL-STD-1750A instructions, is used here for this purpose.

One problem with the DAIS mix is that it does not reflect the impact of data dependencies on system performance. E.g. a multiplication in which the operand is zero may be performed much faster than one with two non-zero operands.

Realistic benchmarks must therefore take both the instruction mix and data dependencies into account. To this end, machine cycle counts in figure 20a which have data dependencies are annotated with either an "a" or "wa" suffix.

An "a" suffix reflects an average number of machine cycles (where each of several possibilities is equally likely) and a "wa" suffix reflects a weighted average number of machine cycles (where some data possibilities are more likely than others).

Weighted averages are only applicable to floating-point operations. Normalisation and alignment operations are also represented. Figure 19 shows MA31750 throughput, at various frequencies and wait states, for the floating point DAIS mix.

5.2. EXPANDED MEMORY PERFORMANCE

The inclusion of an MMU (Memory Management Unit) will degrade the throughput performance of the processor in two ways. Firstly, each memory access will have an additional overhead associated with the formation of the extended address from the MMU. This may require that the processor inserts wait states to lengthen each external cycle. Secondly, the MMU itself may require that some 'housekeeping' work be done by the processor, which will lengthen the program execution time. There are no widely accepted benchmarks which may be used to measure the resultant decrease in throughput.

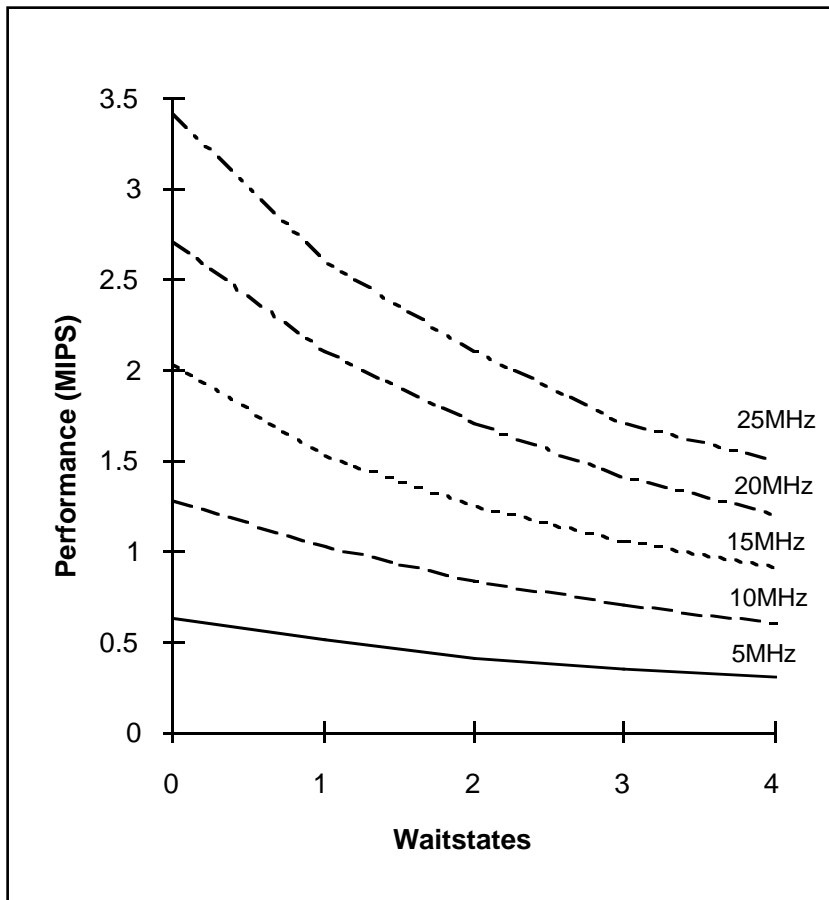


Figure 19: Throughput (MIPS) with Waitstates

5.3. INSTRUCTION SUMMARY

| OPERATION | Mnem. | Format | Opcode (Ext) | Memory cycles | Internal Cycles |
|-----------------------------|-------|--------|--------------|---------------|-----------------|
| SINGLE LOAD/STORE | | | | | |
| Single Precision Load | LR | R | 81 | 1 | 0 |
| | LB | B | 0X | 2 | 1 |
| | LBX | BX | 4X 0 | 2 | 1 |
| | LISP | ISP | 82 | 1 | 0 |
| | LISN | ISN | 83 | 1 | 0 |
| | L | D,DX | 80 | 3 | 0 |
| | LIM | IM,IMX | 85 | 2 | 0 |
| Double-Precision Load | LI | I,X | 84 | 4 | 0 |
| | DLR | R | 87 | 1 | 0 |
| | DLB | B | 0X | 3 | 1 |
| | DLBX | BX | 4X 1 | 3 | 1 |
| Single-Precision Store | DL | D,DX | 86 | 4 | 0 |
| | DLI | I,X | 88 | 5 | 0 |
| | STB | B | 0X | 2 | 0 |
| | STBX | BX | 4X 2 | 2 | 1 |
| Store Non-Negative Constant | ST | D,DX | 90 | 3 | 0 |
| | STI | I,X | 94 | 4 | 0 |
| | STC | D,DX | 91 | 3 | 0 |
| Double-Precision Store | STCI | I,X | 92 | 4 | 0 |
| | DSTB | B | 0X | 3 | 0 |
| | DSTX | BX | 4X 3 | 3 | 1 |
| | DST | D,DX | 96 | 4 | 0 |
| Load Multiple Registers | DSTI | I,X | 98 | 5 | 0 |
| Store Multiple Registers | LM | D,DX | 89 | 3+n | 0 |
| | STM | D,DX | 99 | 2+n | 1 |
| COMPARE | | | | | |
| Single-Precision Compare | CR | R | F1 | 1 | 0 |
| | CB | B | 3X | 2 | 1 |
| | CBX | BX | 4X C | 2 | 1 |
| | CISP | ISP | F2 | 1 | 1 |
| | CISN | ISN | F3 | 1 | 0 |
| | C | D,DX | F0 | 3 | 0 |
| | CIM | IM | 4A A | 2 | 0 |
| Compare Between Limits | CBL | D,DX | F4 | 4 | 2.7a |
| Double-Precision Compare | DCR | R | F7 | 1 | 0 |
| | DC | D,DX | F6 | 4 | 0 |
| BYTE | | | | | |
| Load From Upper Byte | LUB | D,DX | 8B | 3 | 1 |
| | LUBI | I,X | 8D | 4 | 1 |
| Load From Lower Byte | LLB | D,DX | 8C | 3 | 0 |
| | LLBI | I,X | 8E | 4 | 0 |
| Store Into Upper Byte | STUB | D,DX | 9B | 4 | 0 |
| | SUBI | I,X | 9D | 5 | 0 |
| Store Into Lower Byte | STLB | D,DX | 9C | 4 | 1 |
| | SLBI | I,X | 9E | 5 | 1 |
| Exchange Bytes in Register | XBR | S | EC | 1 | 0 |

Figure 20a: Instruction Summary

| OPERATION | Mnem. | Format | Opcode (Ext) | Memory cycles | Internal Cycles |
|---|-------|--------|--------------|---------------|-----------------|
| INTEGER ARITHMETIC | | | | | |
| Single-Precision Integer Add | AR | R | A1 | 1 | 0 |
| | AB | B | 1X | 2 | 1 |
| | ABX | BX | 4X 4 | 2 | 1 |
| | AISP | ISP | A2 | 1 | 0 |
| | A | D,DX | A0 | 3 | 0 |
| Increment Memory by a Positive Integer | AIM | IM | 4A 1 | 2 | 0 |
| | INCM | D,DX | A3 | 4 | 0 |
| Single-Precision Absolute Value | ABS | R | A4 | 1 | 1.5a |
| Double-Precision Absolute Value | DABS | R | A5 | 1 | 1.5a |
| Double-Precision Integer Add | DAR | R | A7 | 1 | 0 |
| | DA | D,DX | A6 | 4 | 0 |
| Single Precision Integer Subtract | SR | R | B1 | 1 | 0 |
| | SBB | B | 1X | 2 | 1 |
| | SBBX | BX | 4X 5 | 2 | 1 |
| | SISP | ISP | B2 | 1 | 1 |
| | S | D,DX | B0 | 3 | 0 |
| Decrement Memory by a Positive Integer | SIM | IM | 4A 2 | 2 | 0 |
| | DECM | D,DX | B3 | 4 | 0 |
| Single-Precision Negate | NEG | R | B4 | 1 | 1 |
| Double-Precision Negate | DNEG | R | B5 | 1 | 1 |
| Double-Precision Integer Subtract | DSR | R | B7 | 1 | 0 |
| | DS | D,DX | B6 | 4 | 0 |
| Single-Precision Integer Multiply with 16-Bit Product | MSR | R | C1 | 1 | 2 |
| | MISP | ISP | C2 | 1 | 2 |
| | MISN | ISN | C3 | 1 | 3 |
| | MS | D,DX | C0 | 3 | 2 |
| | MSIM | IM | 4A 4 | 2 | 2 |
| Single-Precision Integer Multiply with 32-Bit Product | MR | R | C5 | 1 | 1 |
| | MB | B | 1X | 2 | 2 |
| | MBX | BX | 4X 6 | 2 | 2 |
| | M | D,DX | C4 | 3 | 1 |
| | MIM | IM | 4A 3 | 2 | 1 |
| Double-Precision Integer Multiply | DMR | R | C7 | 1 | 16.5a |
| | DM | D,DX | C6 | 4 | 16.5a |
| Single-Precision Integer Divide with 16-Bit Dividend | DVR | R | D1 | 1 | 23.5a |
| | DISP | ISP | D2 | 1 | 23.5a |
| | DISN | ISN | D3 | 1 | 23.5a |
| | DV | D,DX | D0 | 3 | 23.5a |
| | DVIM | IM | 4A 6 | 2 | 23.5a |
| Single-Precision Integer Divide with 32-Bit Dividend | DR | R | D5 | 1 | 28a |
| | DB | R | 1X | 2 | 29a |
| | DBX | BX | 4X 7 | 2 | 29a |
| | D | D,DX | D4 | 3 | 28a |
| | DIM | IM | 4A 5 | 2 | 28a |
| Double-Precision Integer Divide | DDR | R | D7 | 1 | 41a |
| | DD | D,DX | D6 | 4 | 41a |

Figure 20a (continued): Instruction Summary

| OPERATION | Mnem. | Format | Opcode (Ext) | Memory cycles | Internal Cycles |
|---|-------|--------|--------------|---------------|-----------------|
| LOGICAL | | | | | |
| Inclusive Logical-OR | ORR | R | E1 | 1 | 0 |
| | ORB | B | 3X | 2 | 1 |
| | ORBX | BX | 4X F | 2 | 1 |
| | OR | D,DX | E0 | 3 | 0 |
| | ORIM | IM | 4A 8 | 2 | 0 |
| Logical-AND | ANDR | R | E3 | 1 | 0 |
| | ANDB | B | 3X | 2 | 1 |
| | ANDX | BX | 4X E | 2 | 1 |
| | AND | D,DX | E2 | 3 | 0 |
| | ANDM | IM | 4A 7 | 2 | 0 |
| Exclusive Logical-OR | XORR | R | E5 | 1 | 0 |
| | XOR | D,DX | E4 | 3 | 0 |
| | XORM | IM | 4A 9 | 2 | 0 |
| Logical NAND | NR | R | E7 | 1 | 0 |
| | N | D,DX | E6 | 3 | 0 |
| | NIM | IM | 4A B | 2 | 0 |
| Set Bit | SBR | R | 51 | 1 | 0 |
| | SB | D,DX | 50 | 4 | 0 |
| | SBI | I,IX | 52 | 5 | 0 |
| Reset Bit | RBR | R | 54 | 1 | 0 |
| | RB | D,DX | 53 | 4 | 0 |
| | RBI | I,IX | 55 | 5 | 0 |
| Test Bit | TBR | R | 57 | 1 | 0 |
| | TB | D,DX | 56 | 3 | 0 |
| | TBI | I,IX | 58 | 4 | 0 |
| Test and Set Bit | TSB | D,DX | 59 | 2 | 2.5a |
| Set Variable Bit | SVBR | R | 5A | 1 | 0 |
| Reset Variable Bit | RVBR | R | 5C | 1 | 0 |
| Test Variable Bit | TVBR | R | 5E | 1 | 0 |
| Store Register Through Mask | SRM | D,DX | 97 | 4 | 1 |
| JUMP/BRANCH | | | | | |
| Jump on Condition | JC | D,DX | 70 | 3a | 0 |
| | JCI | I,IX | 71 | 3.5a | 0 |
| Jump to Subroutine | JS | D,DX | 72 | 2 | 1 |
| Subtract One and Jump | SOJ | D,DX | 73 | 3a | 0 |
| Branch Unconditionally | BR | ICR | 74 | 2 | 1 |
| Branch if Equal to (Zero) | BEZ | ICR | 75 | 2a | 0 |
| Branch if Less than (Zero) | BLT | ICR | 76 | 2a | 0 |
| Branch to Executive | BEX | S | 77 | 11 | 14 |
| Branch if Less than or Equal to (Zero) | BLE | ICR | 78 | 2a | 0 |
| Branch if Greater than (Zero) | BGT | ICR | 79 | 2a | 0 |
| Branch if Not Equal to (Zero) | BNZ | ICR | 7A | 2a | 0 |
| Branch if Greater than or Equal to (Zero) | BGE | ICR | 7B | 2a | 0 |

Figure 20a (continued): Instruction Summary

MA31750

| OPERATION | Mnem. | Format | Opcode (Ext) | Memory cycles | Internal Cycles |
|--|--------------|---------------|---------------------|----------------------|------------------------|
| EXTENDED PRECISION | | | | | |
| Extended-Precision Floating-Point Load | EFL | D,DX | 8A | 5 | 0 |
| Extended-Precision Floating-Point Store | EFST | D,DX | 9A | 5 | 0 |
| Floating-Point Absolute Value of Register | FABS | R | AC | 1 | 2wa |
| Floating-Point Negate Register | FNEG | R | BC | 1 | 3wa |
| Floating-Point Compare | FCR | R | F9 | 1 | 3.7wa |
| | FCB | B | 3X | 3 | 3.7wa |
| | FCBX | BX | 4X D | 3 | 3.7wa |
| | FC | D,DX | F8 | 4 | 3.7wa |
| Extended-Precision Floating-Point Compare | EFCR | R | FB | 1 | 4wa |
| | EFC | D,DX | FA | 5 | 2wa |
| Floating-Point Add | FAR | R | A9 | 1 | 7wa |
| | FAB | B | 2X | 3 | 8.5wa |
| | FABX | BX | 4X 8 | 3 | 8.5wa |
| | FA | D,DX | A8 | 4 | 8.5wa |
| Extended-Precision Floating-Point Add | EFAR | R | AB | 1 | 21wa |
| | EFA | D,DX | AA | 5 | 20wa |
| Floating-Point Subtract | FSR | R | B9 | 1 | 9wa |
| | FSB | B | 2X | 3 | 10wa |
| | FSBX | BX | 4X 9 | 3 | 10wa |
| | FS | D,DX | B8 | 4 | 9wa |
| Extended-Precision Floating-Point Subtract | EFSR | R | BB | 1 | 23wa |
| | EFS | D,DX | BA | 5 | 22wa |
| Floating-Point Multiply | FMR | R | C9 | 1 | 1 |
| | FMB | B | 2X | 3 | 2 |
| | FMBX | BX | 4X A | 3 | 2 |
| | FM | D,DX | C8 | 4 | 1 |
| Extended-Precision Floating-Point Multiply | EFMR | R | CB | 1 | 33wa |
| | EFM | D,DX | CA | 5 | 32wa |
| Floating-Point Divide | FDR | R | D9 | 1 | 42.8wa |
| | FDB | B | 2X | 3 | 43.8wa |
| | FDBX | BX | 4X B | 3 | 43.8wa |
| | FD | D,DX | D8 | 4 | 42.8wa |
| Extended-Precision Floating-Point Divide | EFDR | R | DB | 1 | 112.6wa |
| | EFD | D,DX | DA | 5 | 112.6wa |
| STACK | | | | | |
| Stack IC and Jump to Subroutine | SJS | D,DX | 7E | 3 | 1 |
| Unstack IC and return from Subroutine | URS | S | 7F | 3 | 1 |
| Pop Multiple registers off the Stack | POPM | S | 8F | 1+n (n=0 to 15) | 4 |
| Push Multiple Registers onto the Stack | PSHM | S | 9F | 1+n (n=0 to 15) | 8 |

Figure 20a: Instruction Summary

| OPERATION | Mnem. | Format | Opcode (Ext) | Memory cycles | Internal Cycles |
|---|--------|--------|--------------|---------------|-----------------|
| CONVERT | | | | | |
| Convert Floating-Point to 16-Bit Integer | FIX | R | E8 | 1 | 7.1a |
| Convert 16-Bit Integer to Floating-Point | FLT | R | E9 | 1 | 3 |
| Convert Extended-Precision Floating-Point to 32-Bit Integer | EFIX | R | EA | 1 | 8.5a |
| Convert 32-Bit Integer to Extended-Precision Floating-Point | EFLT | R | EB | 1 | 9 |
| SHIFT | | | | | |
| Shift Left Logical | SLL | R | 60 | 1 | 0 |
| Shift Right Logical | SRL | R | 61 | 1 | 0 |
| Shift Right Arithmetic | SRA | R | 62 | 1 | 0 |
| Shift Left Cyclic | SLC | R | 63 | 1 | 0 |
| Double Shift Left Logical | DSLL | R | 65 | 1 | 0 |
| Double Shift Right Logical | DSRL | R | 66 | 1 | 0 |
| Double Shift Right Arithmetic | DSRA | R | 67 | 1 | 0 |
| Double Shift Left Cyclic | DSLCL | R | 68 | 1 | 0 |
| Shift Logical, Count in Register | SLR | R | 6A | 1 | 2 |
| Shift Arithmetic, Count in Register | SAR | R | 6B | 1 | 5a |
| Shift Cyclic, Count in Register | SCR | R | 6C | 1 | 2 |
| Double Shift Logical, Count in Register | DSLRL | R | 6D | 1 | 2 |
| Double Shift Arithmetic, Count in Register | DSAR | R | 6E | 1 | 5 |
| Double Shift Cyclic, Count in Register | DSCR | R | 6F | 1 | 2 |
| I/O (See I/O Command Summary) | | | | | |
| Execute I/O | XIO** | IM,IMX | 48 | 3 | 4.3a |
| Vectored I/O (n transfers) | VIO** | D,DX | 49 | *** | *** |
| SPECIAL | | | | | |
| Move Multiple Words, Memory-to-memory (n-words moved) | MOV | S | 93 | 1+2n | 7 |
| Exchange Words in Registers | XWR | R | ED | 1 | 2 |
| Load Status | LST** | D,DX | 7D | 6 | 1 |
| | LSTI** | I,X | 7C | 7 | 1 |
| No Operation | NOP | S | FF 00 | 1 | 2 |
| Break Point | BPT | S | FF FF | 1 | 6 |

Figure 20a (continued): Instruction Summary

MA31750

| OPERATION | Mnem. | Format | Opcode (Ext) | Memory cycles | Internal Cycles |
|--|-------|--------|--------------|---------------|-----------------|
| 1750B MODE INSTRUCTIONS | | | | | |
| The following instructions may only be executed in 1750B mode and are illegal in 1750A | | | | | |
| 'LONG' LOADS AND STORES | | | | | |
| Long Load Single | LSL | S | CC | 3 | 11 |
| Long Load Double | LDL | S | CD | 4 | 20 |
| Long Load Extended Precision Floating-Point | LEFL | S | CE | 5 | 27 |
| Long Store Single | LSS | S | DC | 4 | 9 |
| Long Store Double | LDS | S | DD | 6 | 16 |
| Long Store Extended Precision Floating-Point | LEFS | S | DE | 8 | 23 |
| UNSIGNED ARITHMETIC | | | | | |
| Unsigned Integer Add | UAR | R | AD | 1 | 4 |
| | UA | D,DX | AE | 3 | 4 |
| Unsigned Integer Subtract | USR | R | BD | 1 | 4 |
| | US | D,DX | BE | 3 | 4 |
| Unsigned Integer Compare | UCR | R | FC | 1 | 5 |
| | UC | D,DX | FD | 3 | 5 |
| | UCIM | IM | 4A 0 | 2 | 5 |
| BYTE LOADS AND STORES | | | | | |
| Load Byte | LBY | S | BF | 2 | 3 |
| Load Byte With Increment | LBYI | S | AF | 2 | 3 |
| Store Byte | SBY | S | DF | 2 | 3 |
| Store Byte With Increment | SBYI | S | CF | 2 | 3 |
| BIT OPERATION | | | | | |
| Search First Bit Set | SFBS | R | 95 | 1 | 3.75a |

Notes:

- a Average if more than one alternative exists.
- wa Weighted average where data dependency exists.
- ** Privileged instruction - illegal if PS≠0.
- *** VIO execution time dependent on number and type of transfer.

Figure 20b: MIL-STD-1750B Instruction Summary

5.4 I/O COMMAND SUMMARY

| Operation | Mnem | Code | Ext ¹ |
|-----------|------|------|------------------|
|-----------|------|------|------------------|

| Implemented in CPU 1750A or B mode | | | |
|---|------|------|-----|
| Set Interrupt Mask | SMK | 2000 | No |
| Clear Interrupt Request | CLIR | 2001 | No |
| Enable Interrupts | ENBL | 2002 | No |
| Disable Interrupts | DSBL | 2003 | No |
| Reset Pending Interrupt | RPI | 2004 | No |
| Set Pending Interrupt Reg. | SPI | 2005 | No |
| Write Output Discrete Reg. | OD | 2008 | Yes |
| Reset Normal Power Up Line | RNS | 200A | No |
| Write Status Word | WSW | 200E | Yes |
| Enable Start-Up ROM ³ | ESUR | 4004 | No |
| Disable Start-Up ROM ³ | DSUR | 4005 | No |
| Direct Memory Access Enable ³ | DMAE | 4006 | No |
| Direct Memory Access Disable ³ | DMAD | 4007 | No |
| Timer A Start | TAS | 4008 | No |
| Timer A Halt | TAH | 4009 | No |
| Output Timer A | OTA | 400A | No |
| Reset Trigger-Go | GO | 400B | No |
| Timer B Start | TBS | 400C | No |
| Timer B Halt | TBH | 400D | No |
| Output Timer B | OTB | 400E | No |
| Read Interrupt Mask | RMK | A000 | No |
| Read Pending Interrupt Reg. | RPIR | A004 | No |
| Read Output Discrete Reg. | RDOR | A008 | Yes |
| Read Status Word | RSW | A00E | No |
| Read and Clear Fault Reg. | RCFR | A00F | No |
| Input Timer A | ITA | C00A | No |
| Input Timer B | ITB | C00E | No |
| Read Memory Fault Status | RMFS | A00D | No |

| GPS Defined XIOs | | | |
|--------------------------------|------|------|-----|
| Set Fault Register | SFR | 0401 | No |
| Load OAS register | LOS | 0406 | No |
| Output Trigger-Go Reset Reg. | OTGR | 040E | No |
| Write Page Bank Select | WPBS | 200C | No |
| Read Fault Register (No clear) | RFR | 8401 | No |
| Read Linkage Pointer | RLP | 8404 | No |
| Read Processor Status | RPS | 8405 | No |
| Read OAS register | ROS | 8406 | No |
| Read Memory Fail Address | RMFA | 8407 | No |
| Read Memory Fail Page | RMFP | 8408 | No |
| Read Internal Config. Word | ICW | 840C | No |
| Run Built In Test | BIT | 840D | No |
| Input Trigger-Go Reset Reg. | ITGR | 840E | No |
| Read External Configuration | RCW | 8410 | Yes |

| Implemented in CPU, 1750B mode only. | | | |
|---|------|------|----|
| Output Timer A Reset Reg. | OTAR | 4002 | No |
| Output Timer B Reset Reg. | OTBR | 400F | No |
| Input Timer A Reset Register ² | ITAR | C002 | No |
| Input Timer B Reset Register ² | ITBR | C00F | No |
| Set Fault Mask | SFMK | 2006 | No |
| Write Page Bank Select | WPBS | 200F | No |
| Read Page Bank Select | RPBS | A00C | No |
| Read Fault Mask | RFMK | A006 | No |

| Implemented in BPU | | | |
|---|------|------|-----|
| Memory Protect Enable ³ | MPEN | 4003 | Yes |
| Load Memory Protect RAM ³ | LMP | 50XX | Yes |
| Read Memory Protect RAM ³ | RMP | D0XX | Yes |
| Load Ext Mem. Protect RAM ^{3,5} | LXMP | 4XXX | Yes |
| Read Ext. Mem. Protect RAM ^{3,5} | RXMP | CXXX | Yes |

| Implemented in MMU | | | |
|--|------|------|-----|
| Write Instruction Page Reg. ³ | WIPR | 51XY | Yes |
| Write Operand Page Reg. ³ | WOPR | 52XY | Yes |
| Read Instruction Page Reg. ³ | RIPR | D1XY | Yes |
| Read Operand Page Reg. ³ | ROPR | D2XY | Yes |

| Implemented in Console ⁶ | | | |
|-------------------------------------|----|------|-----|
| Console Data Output ⁴ | CO | 4000 | Yes |
| Console Command ⁴ | CC | 8402 | Yes |
| Console Data Input ⁴ | CI | C000 | Yes |

| Reserved by GPS (Unavailable to the user) | | | |
|--|-------|------|-----|
| Initialise Interrupt Logic | PINIT | 0403 | No |
| Set NPU | RNPU | 040A | No |
| Write Internal config word | WCW | 040C | No |
| Write Memory Config. Reg. | WMCR | 0400 | Yes |
| FMCR | FMCR | A010 | No |

| Spare and Reserved Addresses | | |
|------------------------------|-----------|----------|
| Output | Input | |
| 04XX-1FXX | 84XX-9FXX | Spare |
| 21XX-2FXX | A1XX-AFXX | Reserved |
| 30XX-3FXX | B0XX-BFXX | Spare |
| 41XX-4FXX | C1XX-CFXX | Reserved |
| 53XX-7FXX | D3XX-FFXX | Spare |

¹ External cycles output on the address bus

² GPS defined 1750B XIO's **Reserved Addresses**

³ Command illegal if device not implemented in config word

⁴ External cycle needing external ready generation

⁵ Only implemented in 1750B

⁶ The address 4001 and C001 are implemented but have no effect in the 31750.

Figure 20c: Internal I/O Command Summary

6. TIMING DIAGRAMS

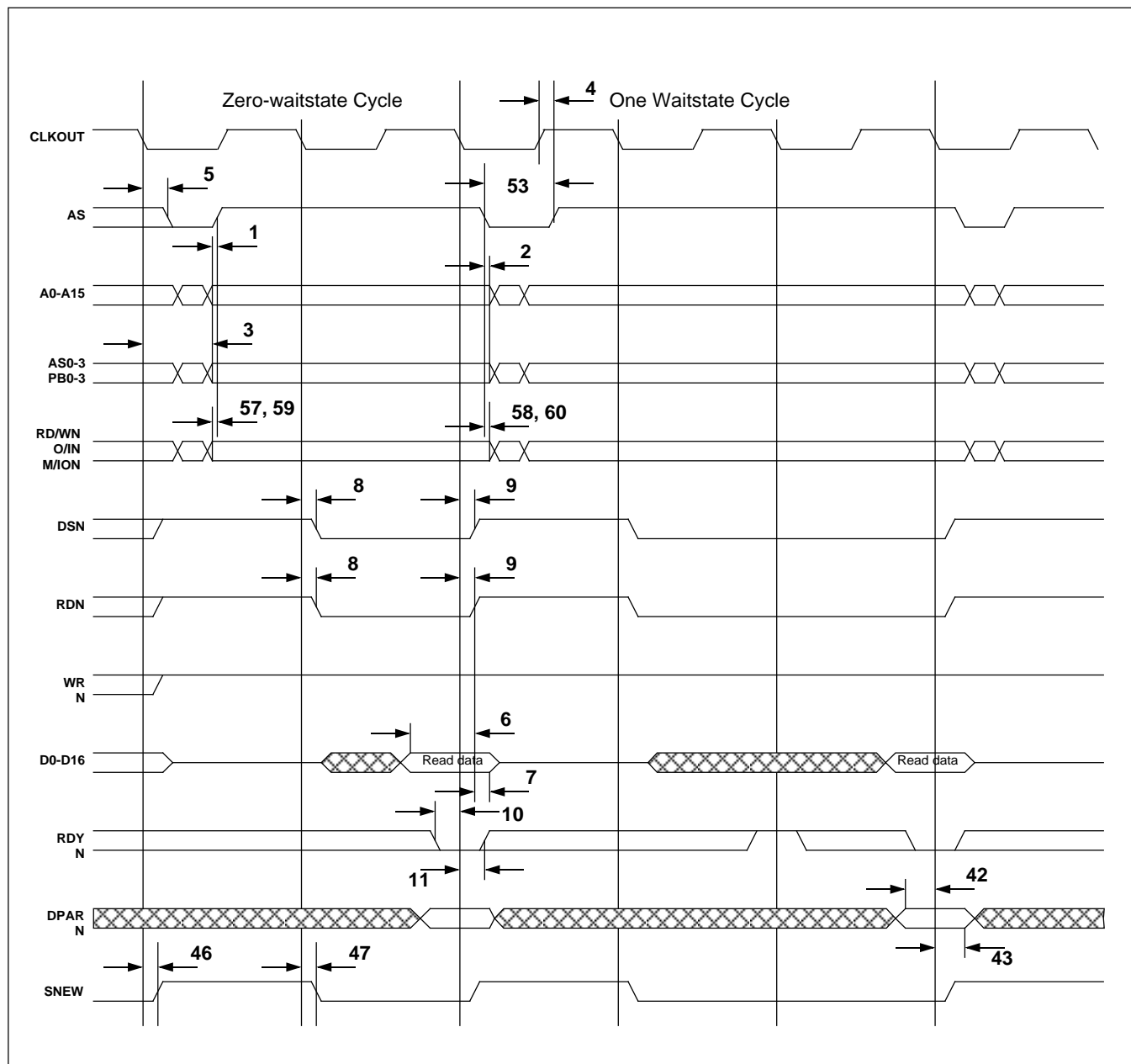


Figure 21: Read Cycle Timings

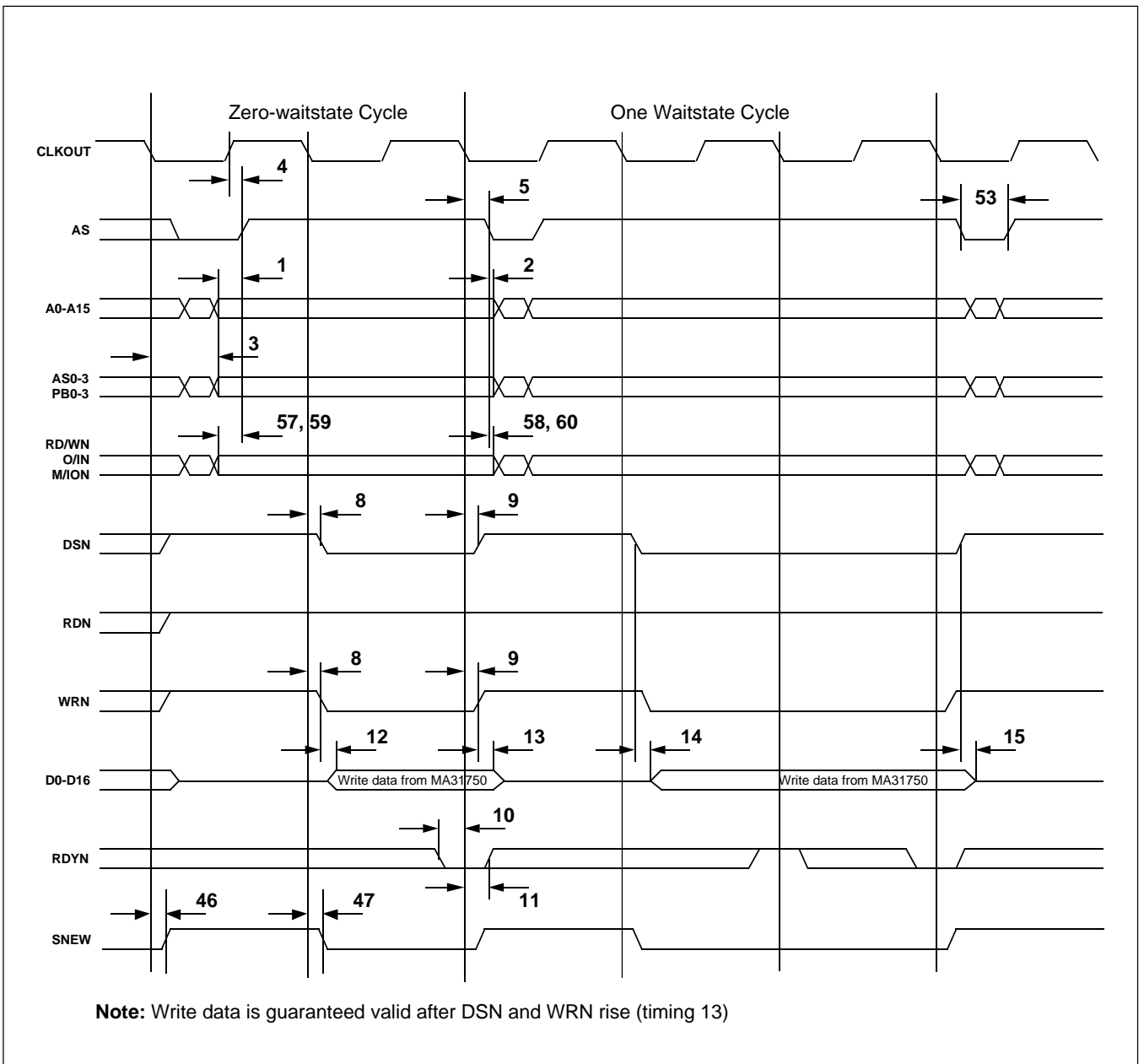
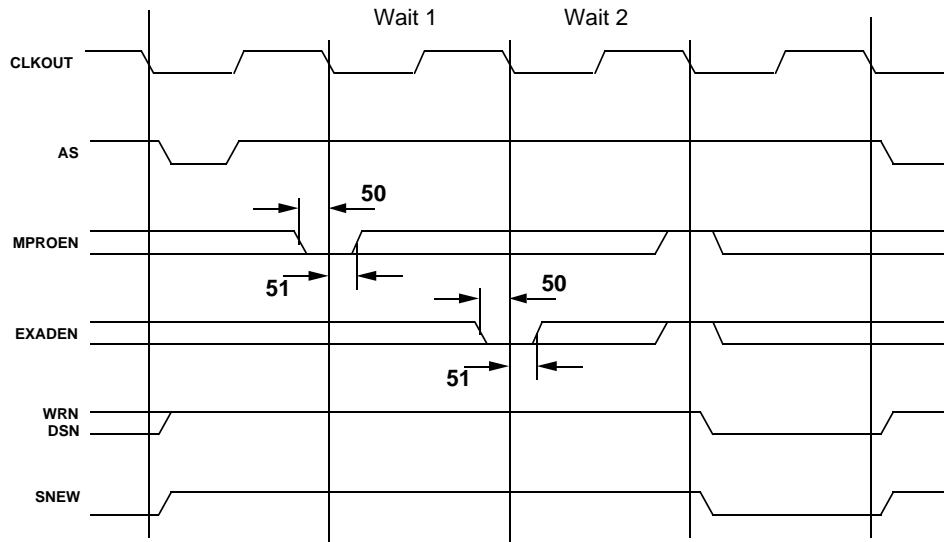
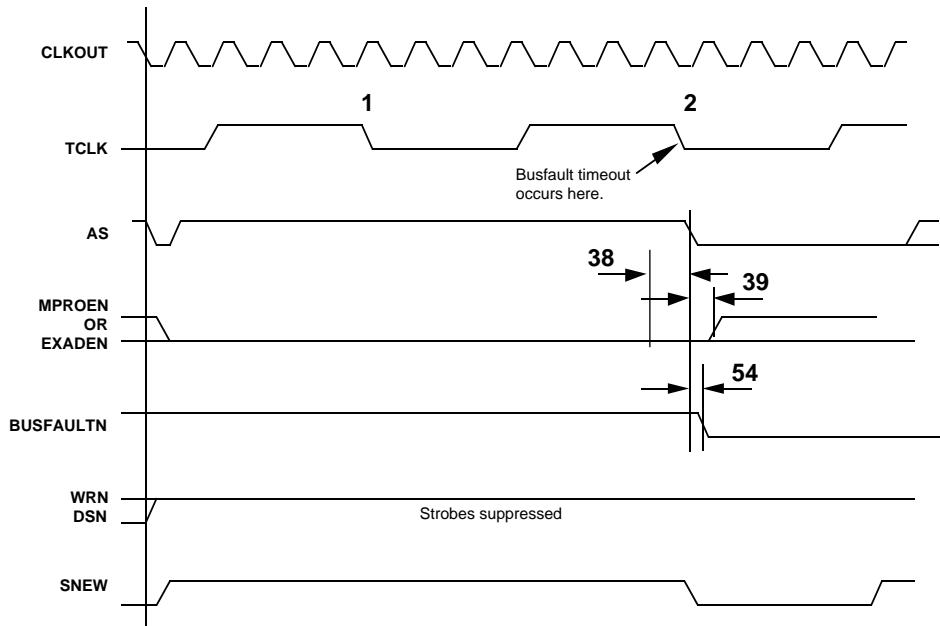


Figure 22: Write Cycle Timings



Notes:
 Diagram shows a WRITE cycle but is also applicable to READ cycles.
 Cycle 'Wait 1' is introduced by MPROEN low.
 Cycle 'Wait 2' is introduced by EXADEN low.
 Strokes RDN/WRN and DSN are not asserted until faults are clear.
 If either MPROEN or EXADEN remains low for two successive falling edges of TCLK, the relevant fault is logged in the fault register.

Figure 23a: MPROEN and EXADEN Timings



Notes:
 Bus fault timeout occurs after two consecutive TCLK falling edges.
 Strokes are suppressed for the duration of the erroneous cycle.
 Normal operation resumes with the following cycle.

Figure 23b: Bus Fault Timeout

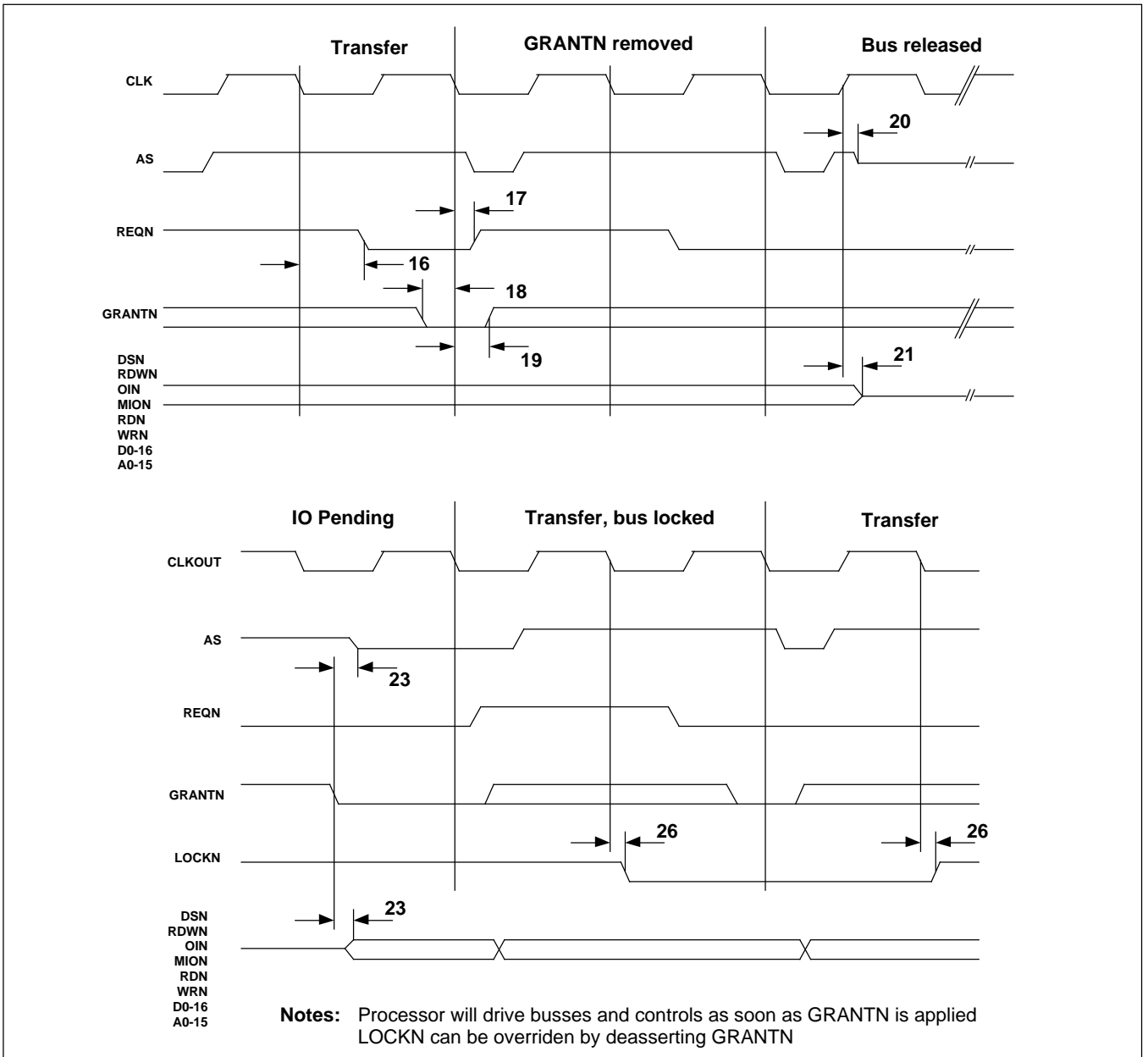


Figure 24: Bus Arbitration Timing

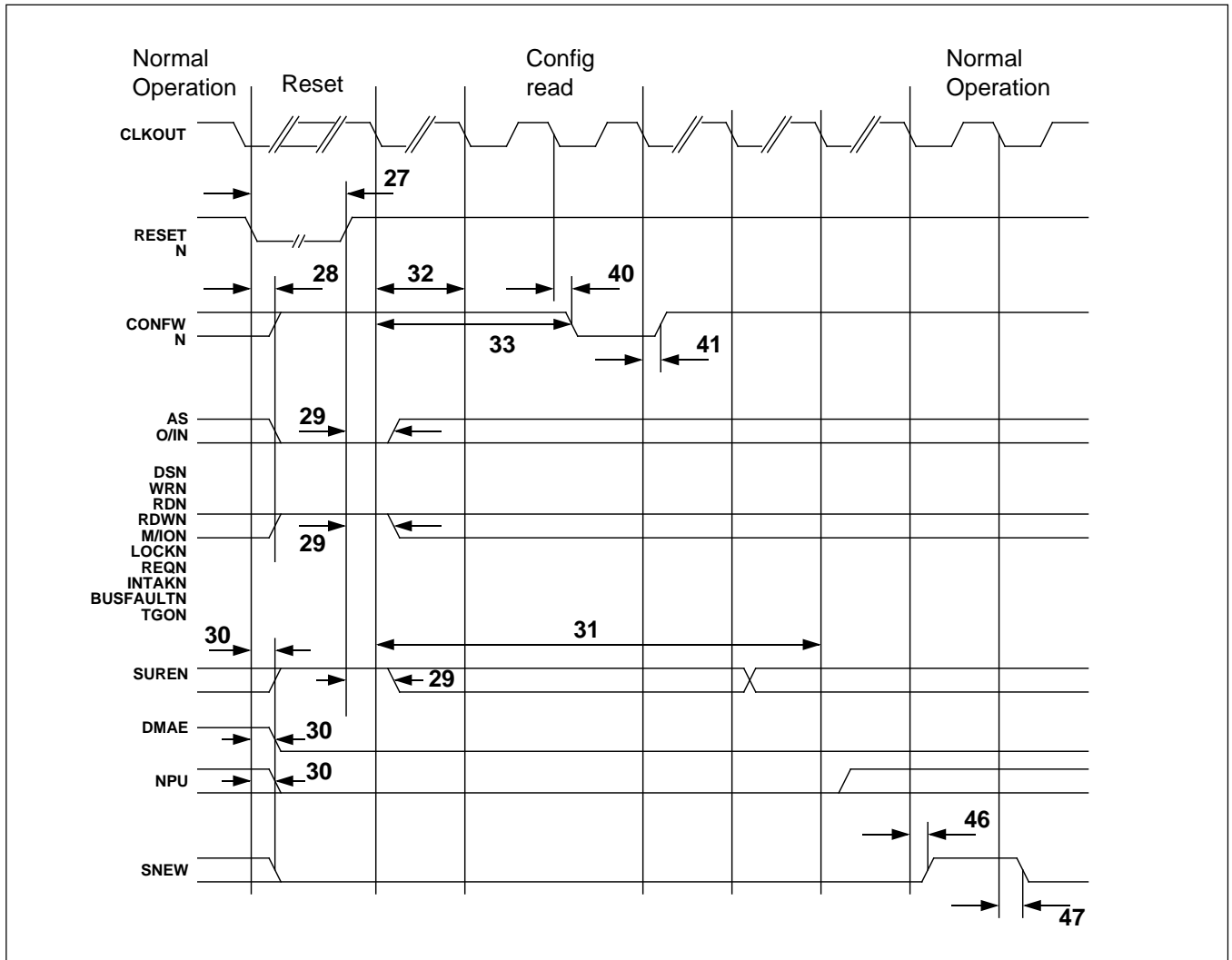


Figure 25: Reset Timing

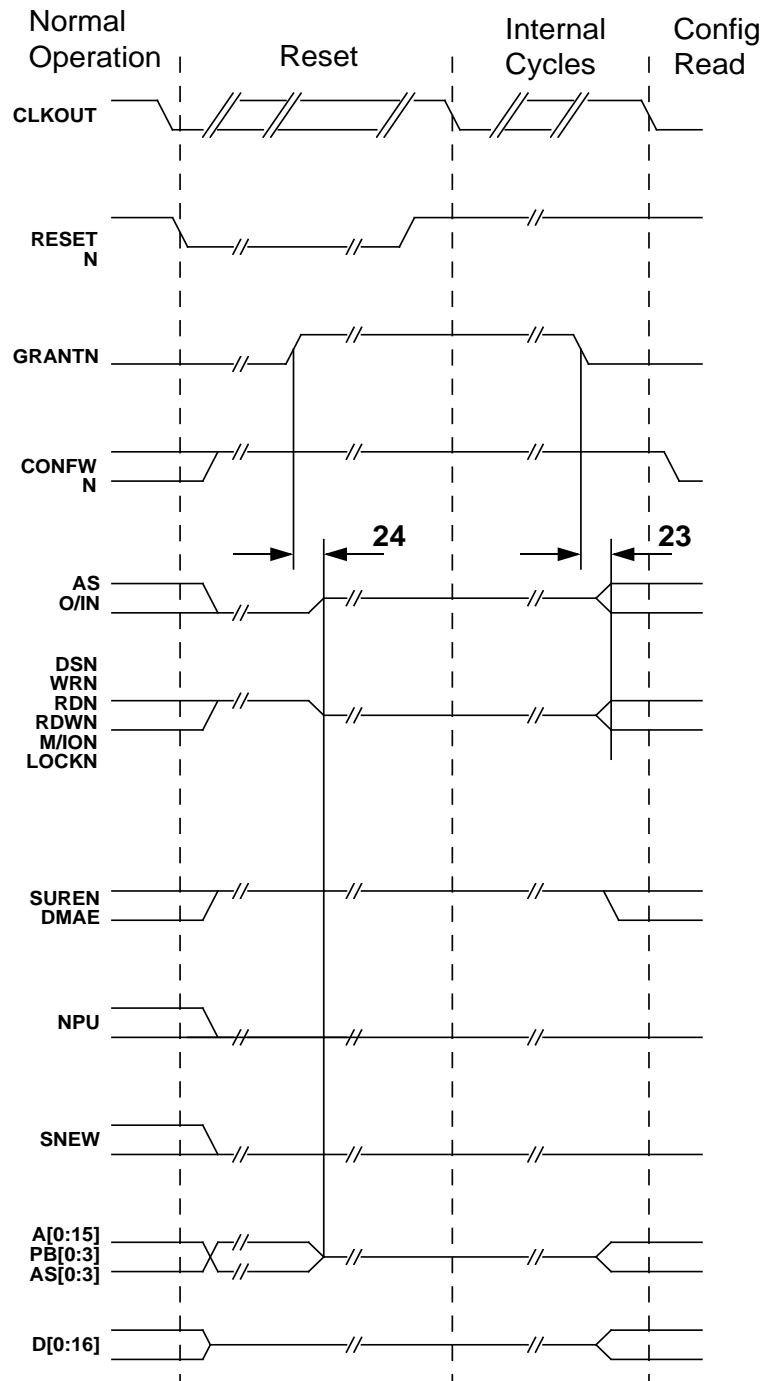


Figure 26: GRANTN during RESETN Low

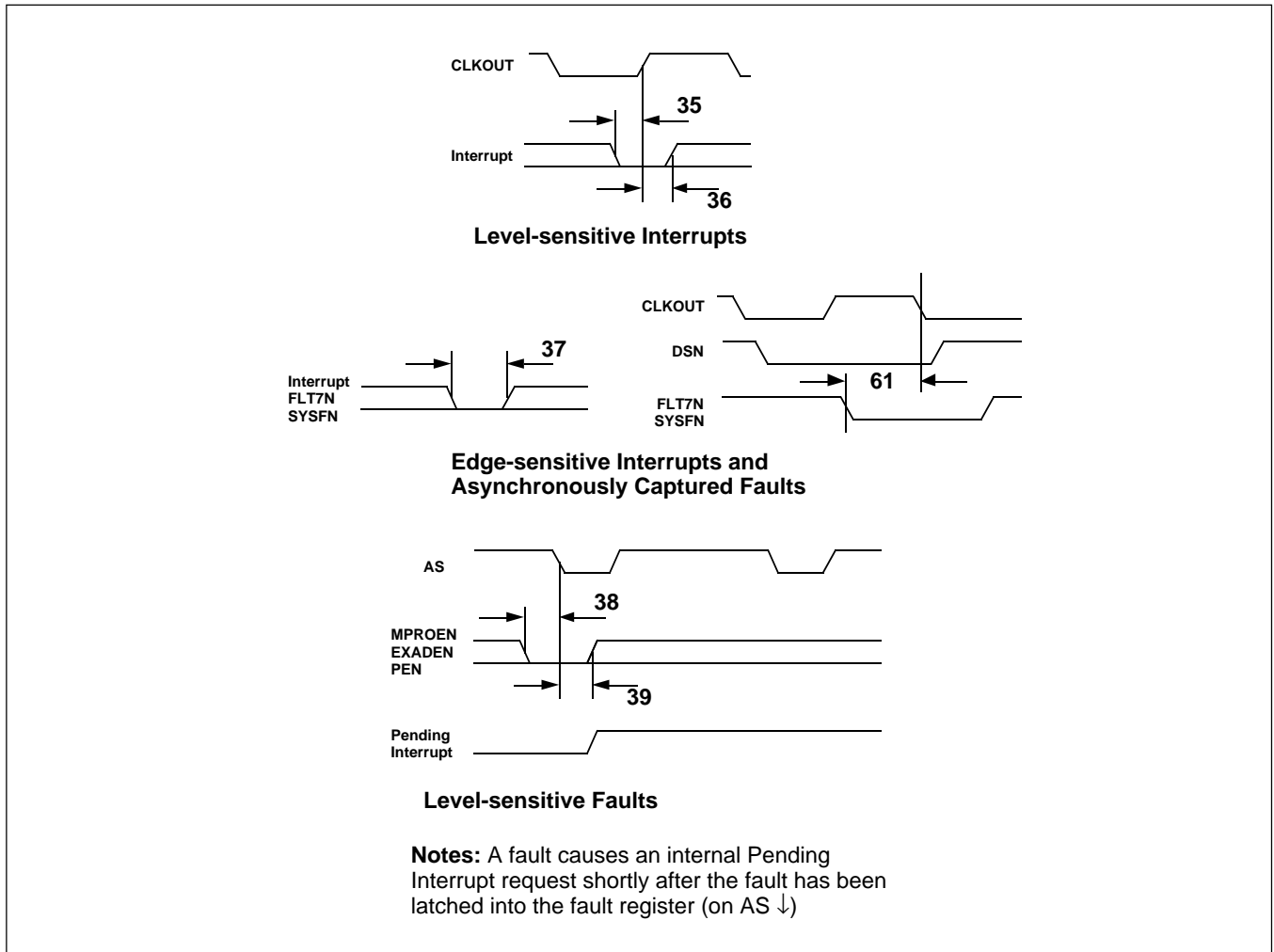


Figure 27: External Interrupt and Fault Timing

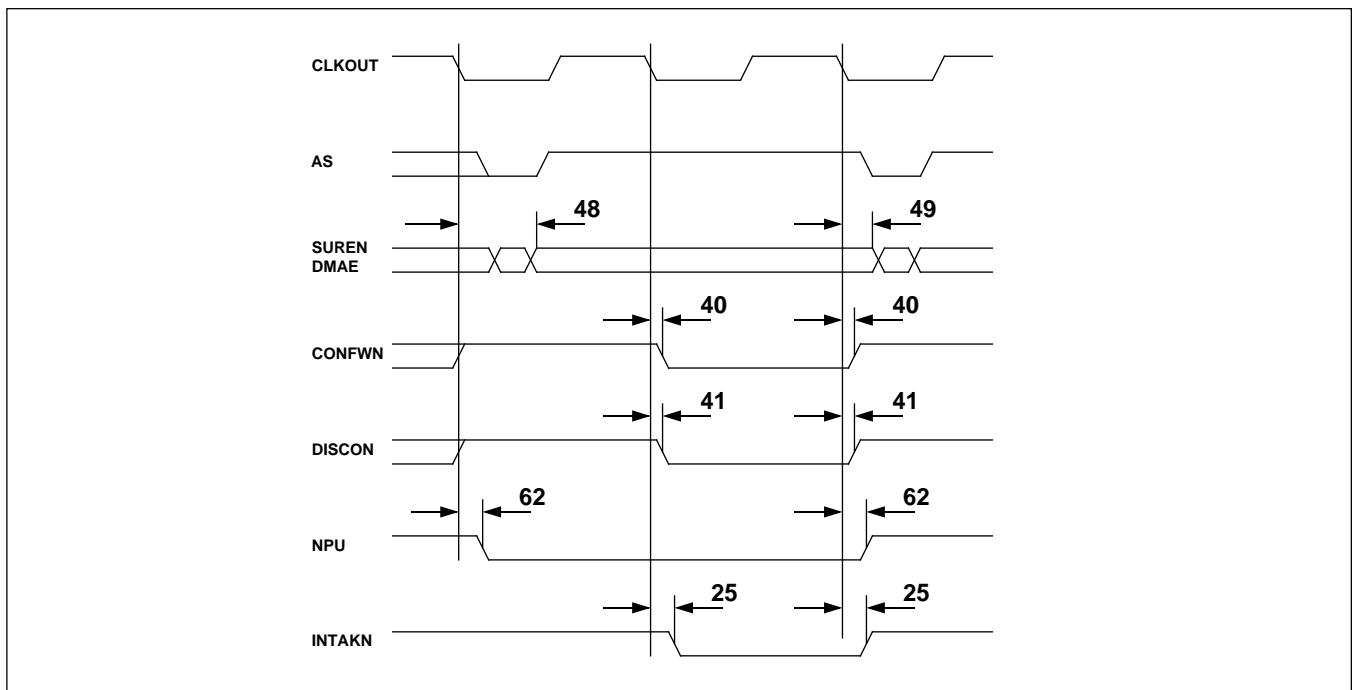


Figure 28: Discrete Timings

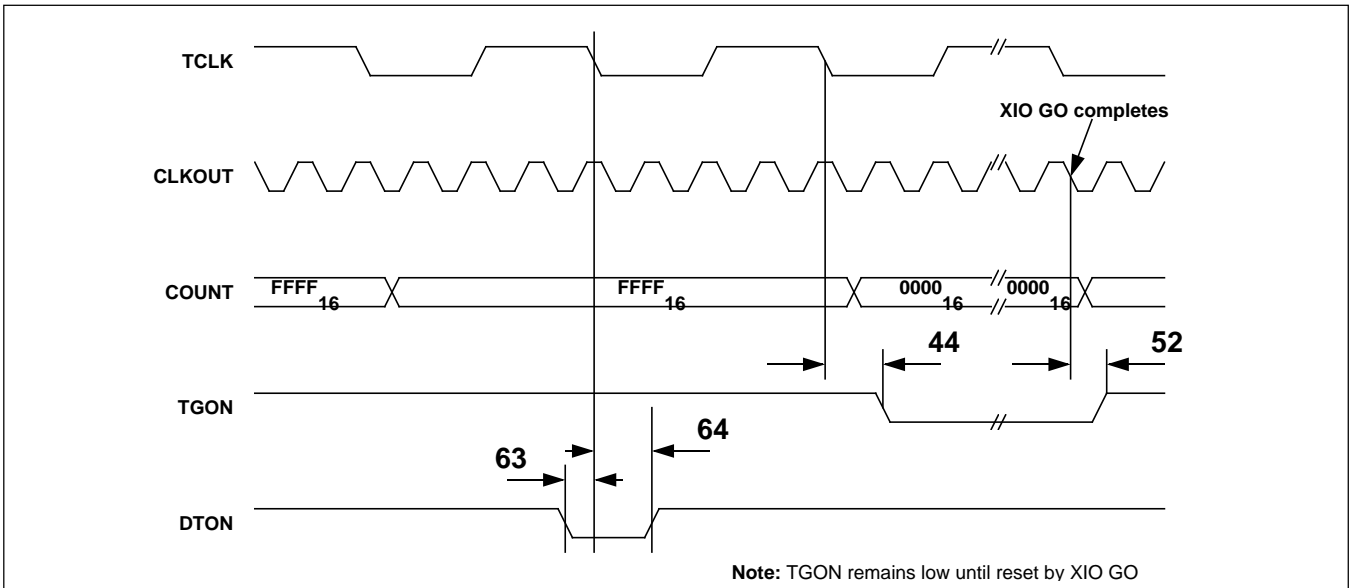


Figure 29: Trigger Go Timing

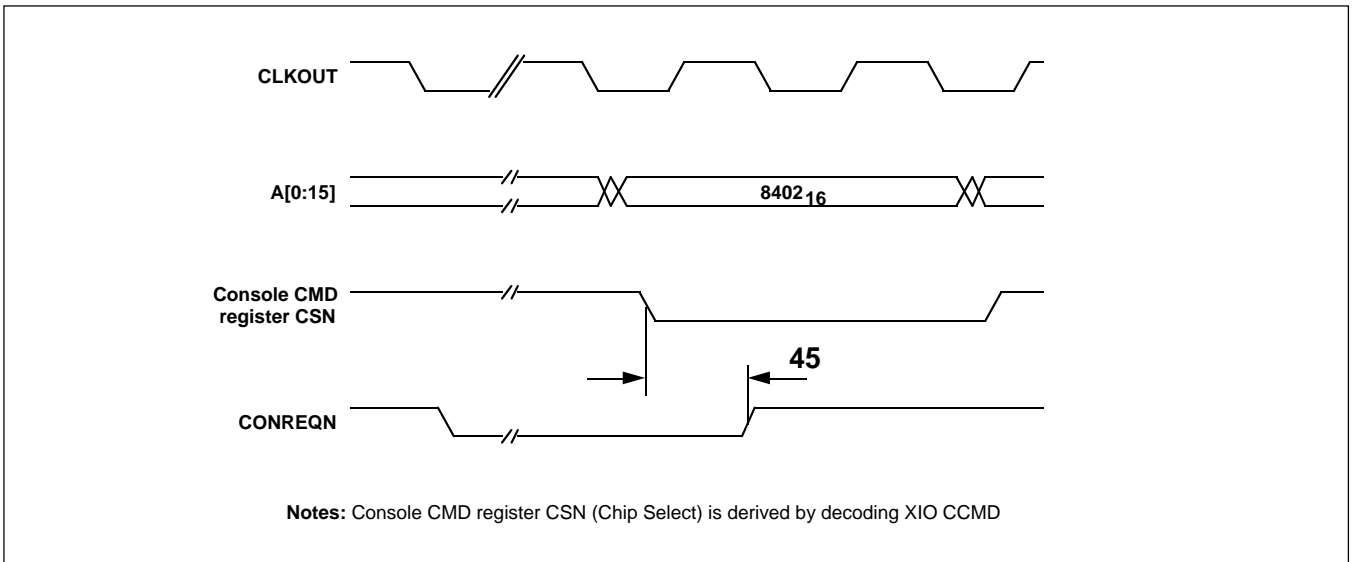


Figure 30: Console Request Timings

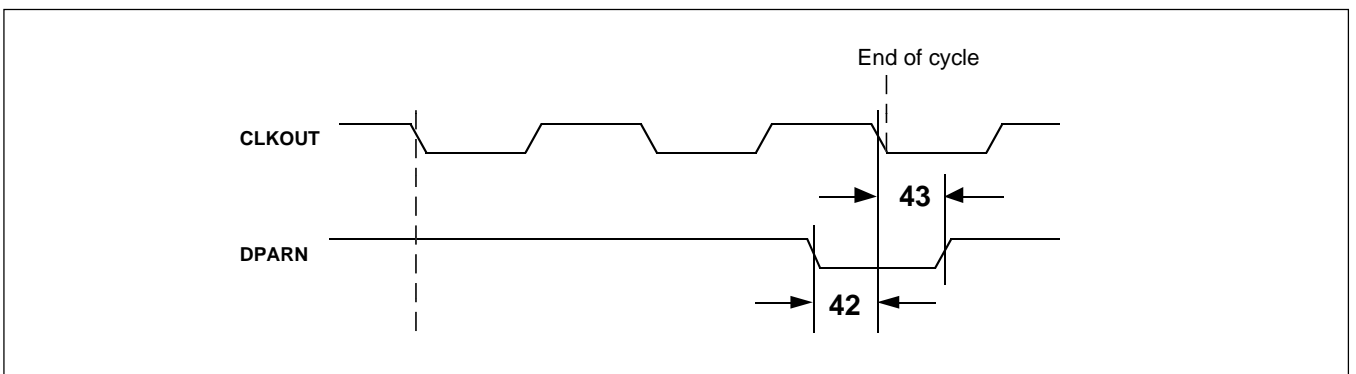


Figure 31: DPARN Timing

MA31750

| No. | Parameter | Min. | Max. | Units |
|-----|---|--------|---------|-------|
| 1 | ADDRESS valid to AS rising | TL-25 | - | ns |
| 2 | ADDRESS valid after AS falling | 5 | 25 | ns |
| 3 | CLKOUT low to ADDRESS valid | - | 40 | ns |
| 4 | CLKOUT rising to AS rising | - | 20 | ns |
| 5 | CLKOUT falling to AS falling | - | 15 | ns |
| 6 | Data setup to RDN rising | 15 | - | ns |
| 7 | Data hold after RDN rising | 0 | - | ns |
| 8 | CLKOUT falling to DSN, RDN, WRN falling | -5 | 10 | ns |
| 9 | CLKOUT falling to DSN, RDN, WRN rising | -5 | 10 | ns |
| 10 | RDYN setup to CLKOUT falling | 25 | - | ns |
| 11 | RDYN hold after CLKOUT falling | 0 | - | ns |
| 12 | WRN falling to write data valid | 5 | 35 | ns |
| 13 | Write data valid after WRN rising (Test Load 2) | 5 | 40 | ns |
| 14 | DSN falling to data bus driven (write) (Test Load 2) | 5 | 35 | ns |
| 15 | DSN rising to data bus hi-Z (write) (Test Load 2) | - | 40 | ns |
| 16 | CLKOUT falling to REQN falling | 15 | 55 | ns |
| 17 | CLKOUT falling to REQN rising | 8 | 40 | ns |
| 18 | GRANTN setup to CLKOUT falling | 15 | - | ns |
| 19 | GRANTN hold after CLKOUT falling | 0 | - | ns |
| 20 | CLKOUT falling to control, strobes and busses hi-Z (GRANTN removed) (Test Load 2) | 2 | 25 | ns |
| 21 | CLKOUT falling to control, strobes and busses hi-Z (GRANTN removed) (Test Load 2) | 10 | 50 | ns |
| 22 | AS falling to control, strobes and busses hi-Z (GRANTN removed) (Test Load 2) | 4 | 40 | ns |
| 23 | GRANTN falling to control, strobes and busses driven | 4 | 25 | ns |
| 24 | GRANTN rising to control, strobes and busses undriven (RESETN = LOW) | 10 | 50 | ns |
| 25 | CLKOUT falling to INTAKN changing | 4 | 30 | ns |
| 26 | CLKOUT falling to LOCKN valid | 4 | 35 | ns |
| 27 | RESETN low pulse width | 10 | - | ns |
| 28 | RESETN low to strobes inactive (GRANTN = LOW) | 10 | 55 | ns |
| 29 | RESETN high to strobes valid (GRANTN = LOW) | 4 | 30 | ns |
| 30 | RESETN falling to DMAE, NPU low, SUREN high | - | 50 | ns |
| 31 | RESETN rising to DMAE, SUREN, NPU initialized | 28 | 13960† | CLK |
| 32 | RESETN rising to first bus cycle (configuration word read) | 6 | 6 | CLK |
| 33 | RESETN rising to CONFVN low | 7 | 7 | CLK |
| 34 | RESETN rising to first instruction fetch | T31+16 | T31+16 | CLK |
| 35 | Interrupt setup to CLKOUT rising (level sensitive) | 15 | - | ns |
| 36 | Interrupt hold after CLKOUT rising (level sensitive) | 20 | - | ns |
| 37 | Interrupt pulse width (edge-sensitive) | 10 | - | ns |
| 38 | MPROEN/EXADEN/PEN setup to AS falling (MPROEN and EXADEN sampled on early time-out) | 5 | - | ns |
| 39 | MPROEN/EXADEN/PEN hold after AS falling (MPROEN and EXADEN sampled on early time-out) | 15 | - | ns |
| 40 | CLKOUT falling to CONFVN changing | 2 | 25 | ns |
| 41 | CLKOUT falling to DISCON changing | 8 | 45 | ns |
| 42 | DPARN setup to CLKOUT falling | 10 | - | ns |
| 43 | DPARN hold after CLKOUT falling | 5 | - | ns |
| 44 | TCLK falling to TGON low | 5 | 45 | ns |
| 45 | CONREQN hold after Console Command Chip Selection | - | 3 | CLK |
| 46 | CLKOUT falling to SNEW rising | 4 | 30 | ns |
| 47 | CLKOUT falling to SNEW falling | 4 | 30 | ns |
| 48 | CLKOUT falling to SUREN/DMAE valid | 4 | 30 | ns |
| 49 | CLKOUT falling to SUREN/DMAE invalid | 4 | 30 | ns |
| 50 | MPROEN/EXADEN setup to CLKOUT falling (to insert early wait states) | 40 | - | ns |
| 51 | MPROEN/EXADEN hold after CLKOUT falling (to insert early wait states) | 0 | - | ns |
| 52 | CLKOUT falling to TGON rising (following XIO GO) | 20 | 80 | ns |
| 53 | AS low pulse width | 0.5T-5 | 0.5T+10 | ns |
| 54 | AS falling to BUSFAULTN valid | - | 45 | ns |
| 55 | CLK rising to CLKOUT rising | 5 | 25 | ns |
| 56 | CLK falling to CLKOUT falling | 5 | 25 | ns |
| 57 | MION valid to AS rising | TL-20 | - | ns |
| 58 | MION valid after AS falling | 1 | 25 | ns |
| 59 | OIN/RDWN valid to AS rising | TL-20 | - | ns |
| 60 | OIN/RDWN valid after AS falling | 1 | 25 | ns |
| 61 | SYSFN/FLT7N setup to CLKOUT (at end of cycle) | 10 | - | ns |
| 62 | CLKOUT falling to NPU changing | - | 30 | ns |
| 63 | DTON setup to TCLK falling | 10 | - | ns |
| 64 | DTON hold after TCLK falling | 10 | - | ns |

† This timing includes MA31751 Setup Cycles and Built In Test Cycles.

Mil-Std-883, Method 5005, Subgroups 9, 10, 11.

TL = Low CLK period (ns), TH = High CLK period (ns).

Test Conditions: Vdd = 5.0V ±10%, Temperature = -55°C to 125°C, Vil = 0.0V, Vih = Vdd.

Output loads: All test load 1 unless otherwise specified.

Output Threshold: 50% Vdd (Load 1), Vss+1V, Vdd-1V (Load 2).

Figure 32a: Timing Parameters for MA31750

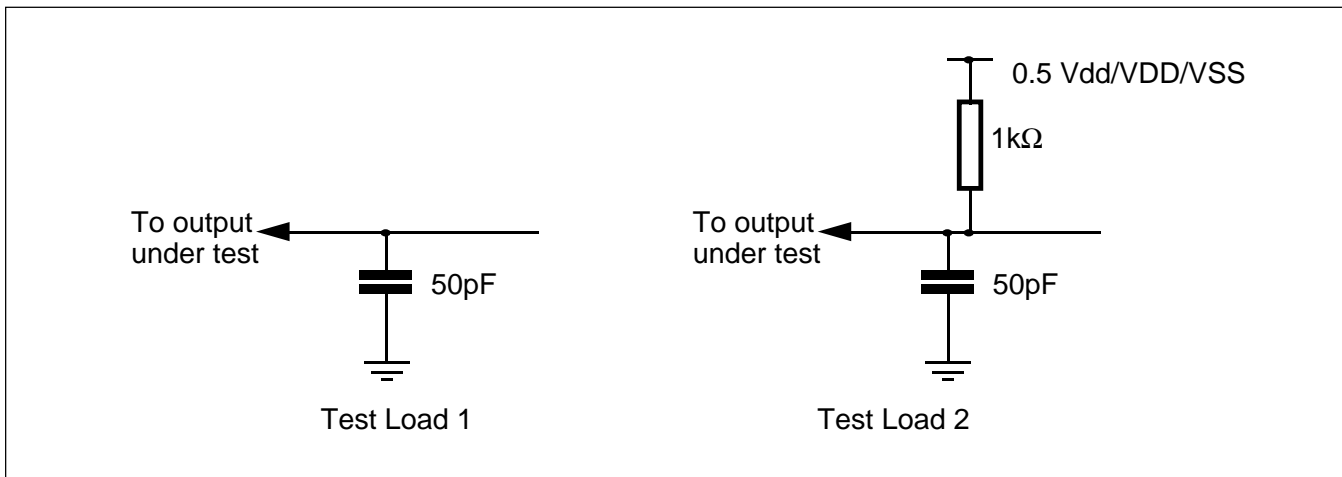


Figure 32b : Output Loads for AC measurements

8. TYPICAL SMALL SYSTEM CONFIGURATION

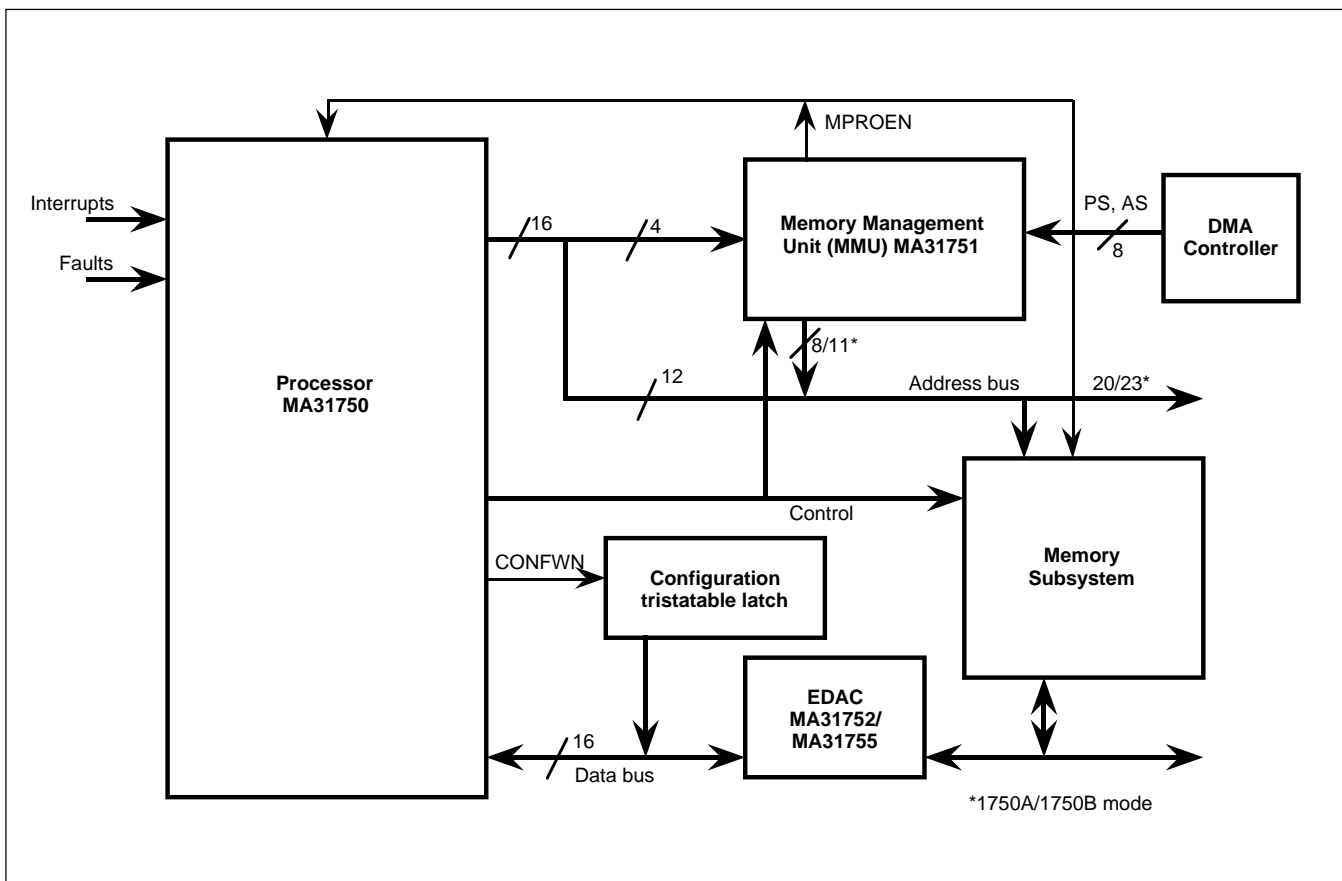


Figure 33: Typical Small System Configuration

A Single Board Computer is available to developers. Please call GPS for details.

9. RATING AND CHARACTERISTICS

| Parameter | Min. | Max. | Units |
|-----------------------------|------|---------|-------|
| Supply voltage | -0.5 | 7 | V |
| Input voltage | -0.3 | VDD+0.3 | V |
| Current through any I/O pin | -20 | 20 | mA |
| Operating temperature | -55 | 125 | °C |
| Storage temperature | -65 | 150 | °C |

Note: Stresses above those listed may cause permanent damage to the device. This is a stress rating only and functional operation of the device at these conditions, or at any other condition above those indicated in the operations section of this specification, is not implied. Exposure to absolute maximum ratings for extended periods may affect device reliability.

Figure 34: Absolute Maximum Ratings

| Parameter | Min. | Max | Units |
|------------------------------|------|------------------------|-------|
| Clock Frequency (CLK) | 0 | 16 | MHz |
| TCLK Frequency | 0 | f _{CLK} / 9 † | Hz |
| Recommended Clock duty cycle | 45 | 55 | % |

† MIL-STD-1750 mandates that TCLK be 100kHz
 V_{DD}=5V±10% over full operating temperature range
 Mil-Std-883, method 5005, subgroups 7, 8A, 8B

Figure 35: Operating AC Electrical Characteristics

| Symbol | Parameters | Conditions | Total dose radiation not exceeding 3x10 ⁵ Rad(Si) | | | Units |
|-------------------|------------------------------------|-----------------------|--|-----|----------------------|-------|
| | | | Min | Typ | Max | |
| V _{DD} | Supply voltage | - | 4.5 | 5.0 | 5.5 | V |
| V _{IH} | Input high voltage | - | 80% V _{DD} | - | - | V |
| V _{IL} | Input low voltage | - | - | - | 20% V _{DD} | V |
| V _{CKH} | CLK & TCLK input high voltage | - | V _{DD} -0.5 | - | - | V |
| V _{CKL} | CLK & TCLK input low voltage | - | - | - | V _{SS} +0.5 | V |
| V _{OH} | Output high voltage | I _{OH} =-3mA | V _{DD} -0.5 | - | - | V |
| V _{OL} | Output low voltage | I _{OL} =5mA | - | - | V _{SS} +0.4 | V |
| I _{IH} | Input high current (Note 1) | - | - | - | 10 | µA |
| I _{IL} | Input low current (Note 1) | - | - | - | -10 | µA |
| I _{OZH} | I/O tristate high current (Note 1) | - | - | - | 50 | µA |
| I _{OZL} | I/O tristate low current (Note 1) | - | - | - | -50 | µA |
| I _{DDYN} | Dynamic supply current @ 16MHz | - | - | - | 80 | mA |
| I _{DDS} | Static supply current | - | - | - | 10 | mA |

V_{DD}=5V±10% over full operating temperature range
 Mil-Std-883, method 5005, subgroups 1, 2, 3
 Note 1: Guaranteed but not tested at low temperature (-55°C)

Figure 36: Operating DC Electrical Characteristics

| Subgroup | Definition |
|----------|--|
| 1 | Static characteristics specified in Table 36 at +25°C |
| 2 | Static characteristics specified in Table 36 at +125°C |
| 3 | Static characteristics specified in Table 36 at -55°C |
| 7 | Functional characteristics specified in Table 35 at +25°C |
| 8A | Functional characteristics specified in Table 35 at +125°C |
| 8B | Functional characteristics specified in Table 35 at -55°C |
| 9 | Switching characteristics specified in Table 32a at +25°C |
| 10 | Switching characteristics specified in Table 32a at +125°C |
| 11 | Switching characteristics specified in Table 32a at -55°C |

Figure 37: Definition of MIL-STD-883, Method 5005 Subgroups

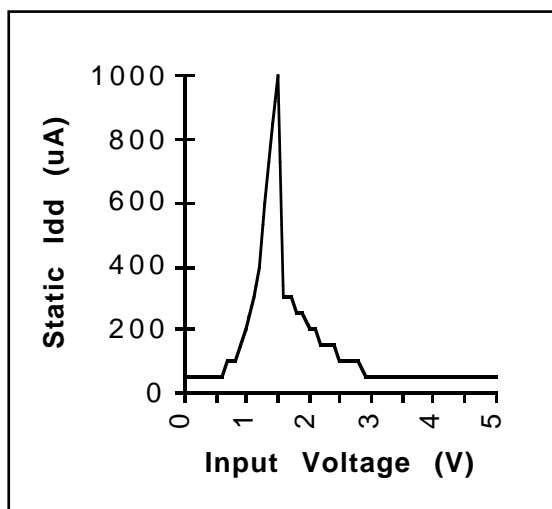


Figure 38: Input Characteristic

10. PIN DESCRIPTIONS

A description of each pin function appears in Figure 39. The acronym is presented first, followed by its function and description. Timing characteristics of each of the functions are shown in section 6.

All signals - with the exception of CLK and TCLK are CMOS compatible, and are protected by an Electrostatic Discharge (ESD) protection circuit. All output signals are also TTL compatible. CLK and TCLK are Schmitt inputs.

Throughout this data sheet, active low signals are denoted by following the signal name with an "N" suffix, e.g., DSN. If a signal has a dual function, both function names will be used separated by a "/". The function name to the left of the "/" will be active high while the function to the right will be active low, again with an "N" suffix, e.g., RD/WN.

All unused inputs should be connected to their inactive state and should not be allowed to float.

MA31750

| Pin Name | Function | Description |
|----------|----------|-------------|
|----------|----------|-------------|

POWER

| | | |
|-----|--------------|--|
| VDD | Power Supply | DC power supply input - nominally +5V. |
| GND | Ground | 0V reference point. |

CLOCK SIGNALS

| | | |
|--------|---------------------------------------|--|
| CLK | System Clock | Schmitt Input clock signal. For correct operation of the timers the CLK frequency should be at least 9 times that of TCLK. |
| CLKOUT | Clock Out | Buffered reference clock derived directly from the internal clock. This signal is used to reference all of the external strobes and internal timing events and may be used to synchronise an external system to the processor. |
| TCLK | Timer Clock <i>100kHz sq. wave</i> | This Schmitt input clock is used by the internal 16-bit timers A and B and by the Trigger-Go-counter. MIL-STD-1750 requires this signal to have a frequency of 100kHz. |

SYSTEM BUSES

| | | |
|---------|----------------------------------|--|
| A00-A15 | Address bus <i>A00 is MSB</i> | An active-high address bus which is input during bus cycles not assigned to this CPU. A00 is the most significant bit. |
| D00-D16 | Data bus <i>D00 is MSB</i> | An active-high data bus which is tristate during bus cycles not assigned to this CPU. D00 is the most significant bit. D16 is the optional parity check bit. |

BUS CONTROL

| | | |
|--------|---|---|
| AS | Address Strobe <i>Active HIGH</i> | This active-high bidirectional signal establishes the beginning and end of each bus cycle. The trailing edge (high to low transition) is used to sample bus cycle-related faults into the fault register. The leading edge guarantees that a valid address is on the address bus. During cycles not assigned to this CPU the AS line is an input to allow the falling edge to continue to latch bus cycle related faults into the fault register. |
| DSN | Data Strobe <i>Active LOW</i> | This active-low signal indicates the presence of data on the system data bus. During a read cycle DSN goes low to indicate that the processor is requesting data from the bus, whilst in a write cycle DSN indicates that data is present on the bus. This signal is tristate in bus cycles not assigned to this CPU. |
| M/IION | Memory/IO Select <i>Memory=HIGH IO=LOW</i> | This signal indicates whether the current bus cycle is accessing memory (high) or IO (low) addressing space. This signal becomes valid shortly after the start of a machine cycle and remains valid throughout. M/IION becomes an input on cycles not assigned to the CPU to ensure that faults are latched into the correct bit of the fault register. |
| RD/WN | Read/Write Select. <i>Read=HIGH Write=LOW</i> | This signal indicates the direction of data transfer on the system data bus. Data is read in by the processor when high, and written out when low. This signal becomes valid shortly after the start of a machine cycle and remains valid throughout. RD/WN is tristate during cycles not assigned to this CPU. |
| O/IN | Operand/Instruction Select. <i>Operand=HIGH Instr.=LOW</i> | This signal indicates whether the current bus cycle is accessing operand (high) or instruction (low) addressing space. This signal becomes valid shortly after the start of a machine cycle and remains valid throughout. O/IN is an input during cycles not assigned to this CPU, to ensure correct operation of the MFPR and the MFAR. |
| RDN | Read Strobe. <i>Active LOW</i> | This active-low output is asserted low with DSN during read cycles. It is driven high on the same clock edge as that used by the processor to latch the input data. This signal is tristate in bus cycles not assigned to this CPU. |
| WRN | Write Strobe. <i>Active LOW</i> | This active-low output signal is asserted low with DSN during write cycles. The rising edge should be used by the system to latch data from the data bus. This signal is tristate in bus cycles not assigned to this CPU. |
| RDYN | Ready. <i>Active LOW</i> | This input signal allows the basic machine cycle of the processor to be extended to accommodate slower peripheral or memory devices. Ready may be asserted high to add an integer number of CLK cycles (wait states) to the machine cycle. The line must be asserted low to allow processing to proceed. RDYN has no effect on cycles dedicated to internal operations. Note: If RDYN is held high during two consecutive TCLK high-to-low transitions (with DSN low), a bus timeout fault will occur and will be indicated in the appropriate bit in the fault register. The occurrence of this fault will cause the state sequencer to terminate the current machine cycle and begin the next. At the end of the current macro-instruction execution will branch, unless masked, to the machine error interrupt (level 1) software routine. The DTON signal may be used to override this feature. |

Figure 39: Pin Descriptions

| Pin Name | Function | Description |
|---|--|--|
| BUS ARBITRATION | | |
| LOCKN | Bus Lock Request. <i>Active LOW</i> | This active-low output signal indicates to the bus arbiter that the processor is performing an atomic instruction which should not be interrupted. External bus accesses should be denied whilst LOCKN is low. The CPU will lock the bus during read-modify-write instructions such as DECM (Decrement Memory) and TSB (Test & Set Bit). LOCKN remains high during non-locked cycles. This signal is tri-stated on cycles not assigned to this CPU. Note: LOCKN is advisory only - it may be ignored by the arbiter if necessary. |
| REQN | Bus Request. <i>Active LOW</i> | This active-low output signal is driven low when the CPU requires the bus in the next cycle. This signal may be used as an input to an external bus arbiter. The signal becomes invalid once the CPU has started the requested cycle. |
| GRANTN | Bus Grant. <i>Active LOW</i> | This active-low signal is asserted by an external bus arbiter to indicate that the CPU currently has the highest priority bus request. The CPU will begin a bus cycle (if one is pending) commencing with the next CPU clock cycle. |
| INTERRUPTS | | |
| PWRDN | Power-Down Interrupt. <i>Active LOW</i> | A low on this active low input will be captured in the PI register and sets Pending Interrupt 0. This is the highest priority interrupt and cannot be masked or disabled. |
| INT02N, INT08N, INT10N, INT11N, INT13N, INT15N | Interrupt Inputs. <i>Active LOW</i> | A low on any of these active low inputs will be captured in the PI register and will set Pending Interrupt levels 2, 8, 10, 11, 13, and 15, respectively. Level 2 is the highest priority user level, while level 15 is the lowest priority. These interrupts are maskable and can be disabled. If edge sensitivity has been selected, interrupts will be captured on the falling edge of the interrupt input, otherwise the interrupt will be latched by the falling edge of CLK at the end of the machine cycle. Note: Interrupt levels 1, 3, 4, 5, 6, 7 and 9 are dedicated to internal machine interrupts. |
| IOI1N, IOI2N | | A low on either input will set Pending Interrupt levels 12 or 14 respectively. These inputs are level sensitive only and are captured by the falling edge of CLK at the end of a machine cycle. These inputs can be masked and disabled. |
| INTAKN | Interrupt Acknowledge Strobe. <i>Active LOW</i> | This active-low output indicates the start of an interrupt service. When low, the processor outputs the Linkage Pointer (LP) address to the system. The INTAKN signal may be used to remove level-sensitive interrupt inputs: the current interrupt priority can be ascertained by reading the address bus during the cycle in which this output is low. |
| FAULTS | | |
| MPROEN | Memory Protect Fault. <i>Active LOW</i> | A low on this input, sampled on falling AS, indicates that an execute protect or write protect fault has been detected. Bit 0 of the fault register is set if this signal is applied during a CPU cycle; bit 1 is set if the line goes low during a DMA cycle. Either condition sets Pending Interrupt level 1. The CPU will prevent access to memory (by inhibiting strobe production) whilst this input is LOW. See 3.4.7.1. To effectively use this feature, MPROEN should be pulled low prior to the start of the next machine cycle. |
| PEN | Parity Error <i>Active LOW</i> | A low on this active-low input, sampled on falling AS, informs the CPU that an external parity error has occurred. Bit 2 (memory), 3 (IO) or 4 (DMA) of the Fault Register is set, depending upon the type of transfer taking place. This asserts a level 1 Pending Interrupt. |
| EXADEN | External Address Error <i>Active LOW</i> | A low on this active-low input, sampled on falling AS, informs the CPU that an external address error has occurred. Bit 8 of the fault register is set if this signal goes low during a memory cycle; bit 5 is set if the signal goes low during an IO cycle and bit 14 is set if a DMA has control of the system. Either error condition asserts a level 1 pending interrupt. As with MPROEN, the CPU will prevent access to memory (by inhibiting strobe production) whilst this input is LOW. See 3.4.8.1 |
| FLT7N | Fault Level 7 <i>Active LOW</i> | A low at any time on this active-low input sets bit 7 of the fault register, causing a level 1 pending interrupt. This fault is user-definable. |
| SYSFN | System Fault <i>Active LOW</i> | A low at any time on this active-low input sets bits 13 and 15 of the fault register, causing a level 1 pending interrupt. This fault is user-definable. |
| BUSFAULTN | Illegal address <i>Active LOW</i> | This active-low output drops low if any bus-related fault (MPROEN, EXADEN or PEN) is detected low or if the bus fault timeout circuit causes an interface timeout. |

Figure 39 (continued): Pin Descriptions

MA31750

| Pin Name | Function | Description |
|----------|----------|-------------|
|----------|----------|-------------|

MMU CONTROL

| | | |
|---------|--|--|
| AS[0:3] | Address State Active HIGH <i>AS0 is MSB</i> | This active-high bus indicates the current address state of the CPU. The value on this bus is copied from the Status Word register within the CPU. These lines are inputs during bus cycles not assigned to this CPU, so that the MFPR and the MFAR can store the relevant failure information if a remote failure occurs. |
| PB[0:3] | Page Bank Select Active HIGH <i>PB0 is MSB</i> | In 1750B mode, this active-high bus indicates the current CPU Page Bank. The value on this bus is copied from the Status Word register within the CPU. These lines are inputs during bus cycles not assigned to this CPU, so that the MFPR and the MFAR can store the relevant failure information if a remote failure occurs. |

DISCRETES

| | | |
|---------|---|--|
| CONFVN | Configuration Register Read Strobe <i>Active LOW</i> | This active-low output signal is driven low when the processor reads the external configuration register. The line may be used as an output enable for this register. The configuration register is read during initialisation and during the execution of a BPT instruction to determine the system configuration. |
| SNEW | Start of New Cycle Strobe <i>Active HIGH</i> | This active-high output will be asserted high during the first phase of each machine cycle. |
| DISCON | Discreted Output Strobe <i>Active LOW</i> | This active-low output will be asserted low by the processor during an XIO OD or XIO RDOR command. It may be used as the enable signal for an external discrete output register. |
| DMAE | DMA Enable <i>Active HIGH</i> | This active-high output indicates that an external DMA device is enabled. It is disabled (low) following reset and can be toggled under program control using XIO DMAE and XIO DMAD, (if a DMA device is set as present in the configuration register). |
| CONREQN | Console Request <i>Active LOW</i> | This active-low input initiates and controls Console operation following the end of a 1750 instruction. Commands and data are passed to the processor in this mode via three dedicated registers in IO space. Console operation takes precedence over Interrupts. |
| SUREN | Start-Up-ROM Enable <i>Active LOW</i> | This active-low output indicates that start-up ROM is enabled. The signal is asserted low following initialisation or by XIO ESUR. The signal remains asserted until removed with XIO DSUR. When a start-up ROM is present on the system indicated in the configuration word, this signal should be used to qualify its chip select or output enable such that the ROM may be accessed only when SUREN is low. Note: Instruction pipelining must be considered in moving from Start-Up ROM to RAM. See Section 4 on Software Considerations. |
| NPU | Normal Power-Up Discrete <i>Active HIGH</i> | This output is asserted to indicate that the Built-In-Test (BIT), performed on reset or power-up, has passed. The line is asserted low following an external reset and may also be reset by software using the XIO RNS command. |
| TGON | Trigger-Go Output Discrete <i>Active LOW</i> | This active-low output is asserted low whenever the Trigger-Go counter overflows (rolls over to 0000). It returns to the high state when the counter is reset by software (using the XIO GO command). |
| DTON | Disable Timeout <i>Active LOW</i> | A low on this input will reset and disable the bus fault timeout circuit. |
| DPARN | Disable Parity <i>Active LOW</i> | A low on this input will reset and disable the on-chip parity verification. Note: Parity <i>generation</i> on write data is not disabled by this pin. |
| RESETN | CPU reset <i>Reset=LOW</i> | This active-low input should be asserted low to reset the processor. The low to high transition will start the initialisation sequence which will perform a Built-In-Test (if selected), initialising the processor in accordance with MIL-STD-1750 (see figures 2 and 3). |

Figure 39 (continued): Pin Descriptions

11. PIN ASSIGNMENTS AND OUTLINES

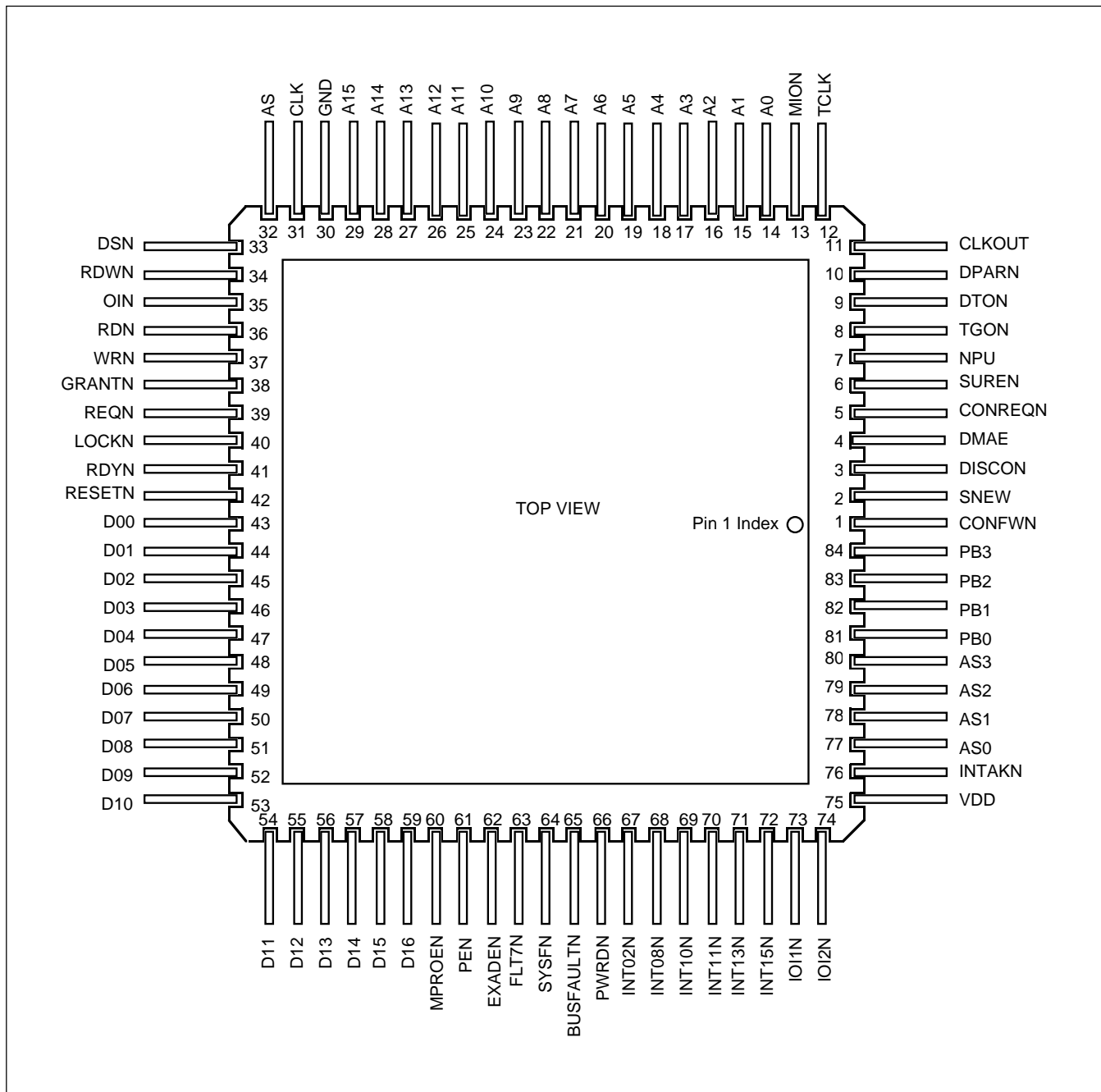
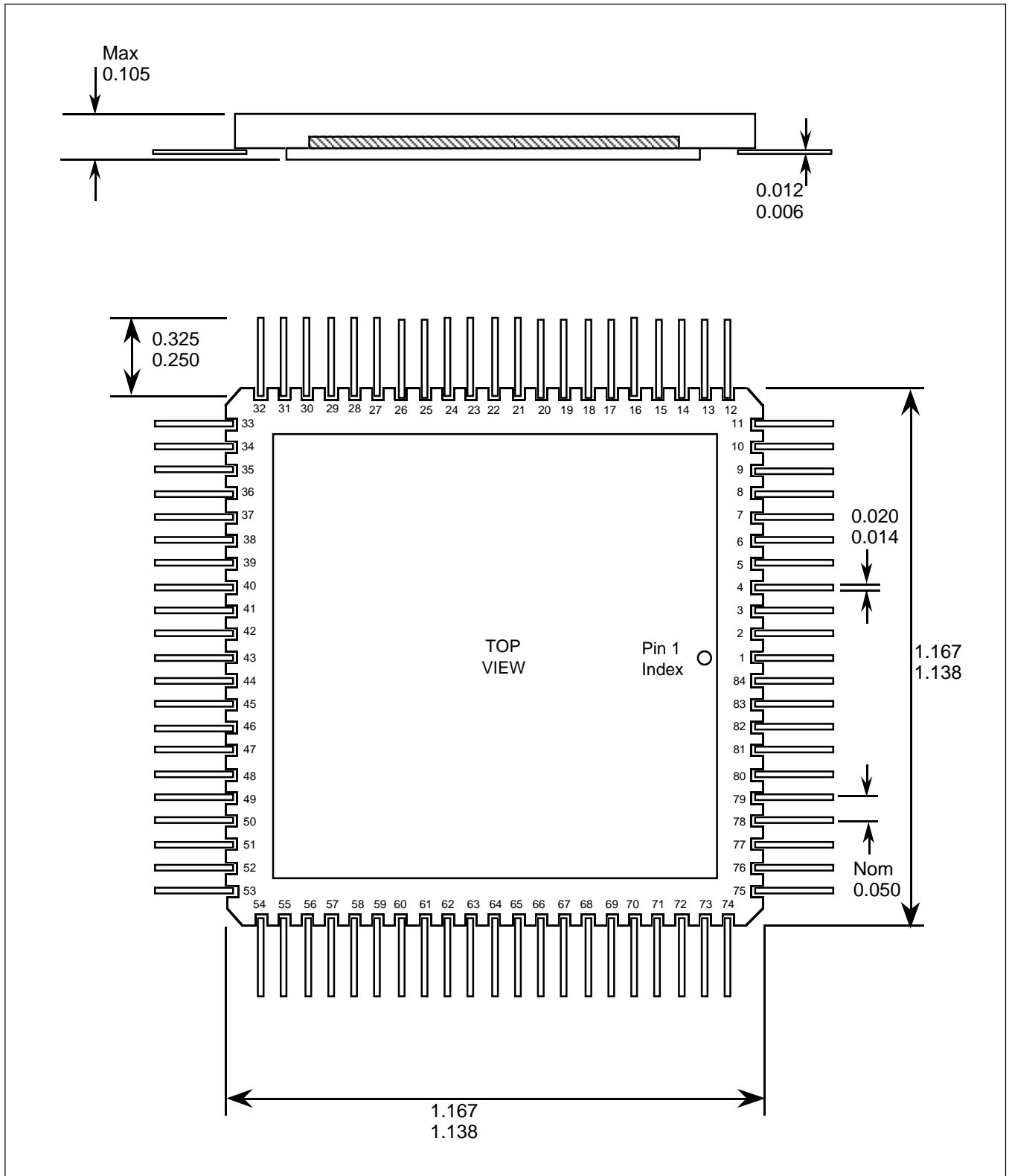


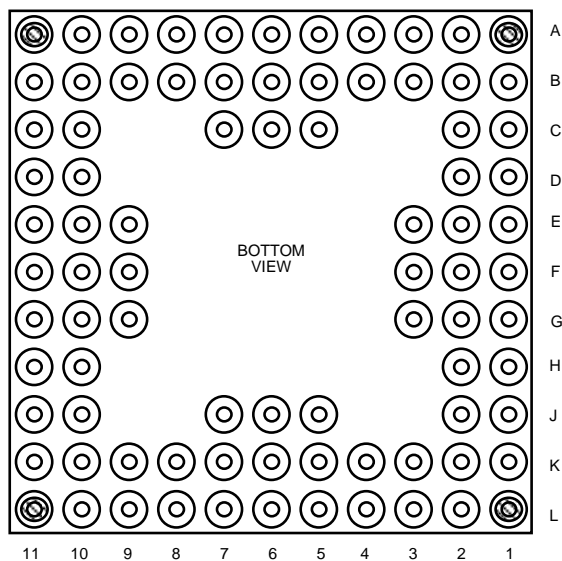
Figure 40a: 84-Lead Flatpack - Package Style F

MA31750



NOTE: All dimensions shown in inches

Figure 40b: 84-Lead Flatpack - Package Style F



| | | | | | | | |
|-----|--------|-----|-----------|-----|---------|-----|--------|
| A1 | IOI2N | B11 | D08 | F9 | D00 | K2 | TCLK |
| A2 | INT15N | C1 | AS1 | F10 | RESETN | K3 | MION |
| A3 | INT13N | C2 | INTAKN | F11 | D04 | K4 | A02 |
| A4 | INT10N | C5 | BUSFAULTN | G1 | DISCON | K5 | A05 |
| A5 | PWRDN | C6 | SYSFN | G2 | DMAE | K6 | A04 |
| A6 | INT08N | C7 | MPROEN | G3 | CONREQN | K7 | A11 |
| A7 | EXADEN | C10 | D09 | G9 | REQN | K8 | A14 |
| A8 | D16 | C11 | D07 | G10 | LOCKN | K9 | CLK |
| A9 | D14 | D1 | AS3 | G11 | RDYN | K10 | DSN |
| A10 | D13 | D2 | AS2 | H1 | SUREN | K11 | OIN |
| A11 | D10 | D10 | D06 | H2 | NPU | L1 | CLKOUT |
| B1 | AS0 | D11 | D05 | H10 | WRN | L2 | A00 |
| B2 | VDD | E1 | PB2 | H11 | GRANTN | L3 | A01 |
| B3 | IOI1N | E2 | PB1 | J1 | TGON | L4 | A03 |
| B4 | INT11N | E3 | PB3 | J2 | DPARN | L5 | A06 |
| B5 | INT02N | E9 | D01 | J5 | A07 | L6 | A09 |
| B6 | FLT7N | E10 | D03 | J6 | A08 | L7 | A10 |
| B7 | PEN | E11 | D02 | J7 | A12 | L8 | A13 |
| B8 | D15 | F1 | SNEW | J10 | RDWN | L9 | A15 |
| B9 | D12 | F2 | PB0 | J11 | RDN | L10 | GND |
| B10 | D11 | F3 | CONFVN | K1 | DTON | L11 | AS |

Figure 41a: 84-Pin Grid Array - Package Style A

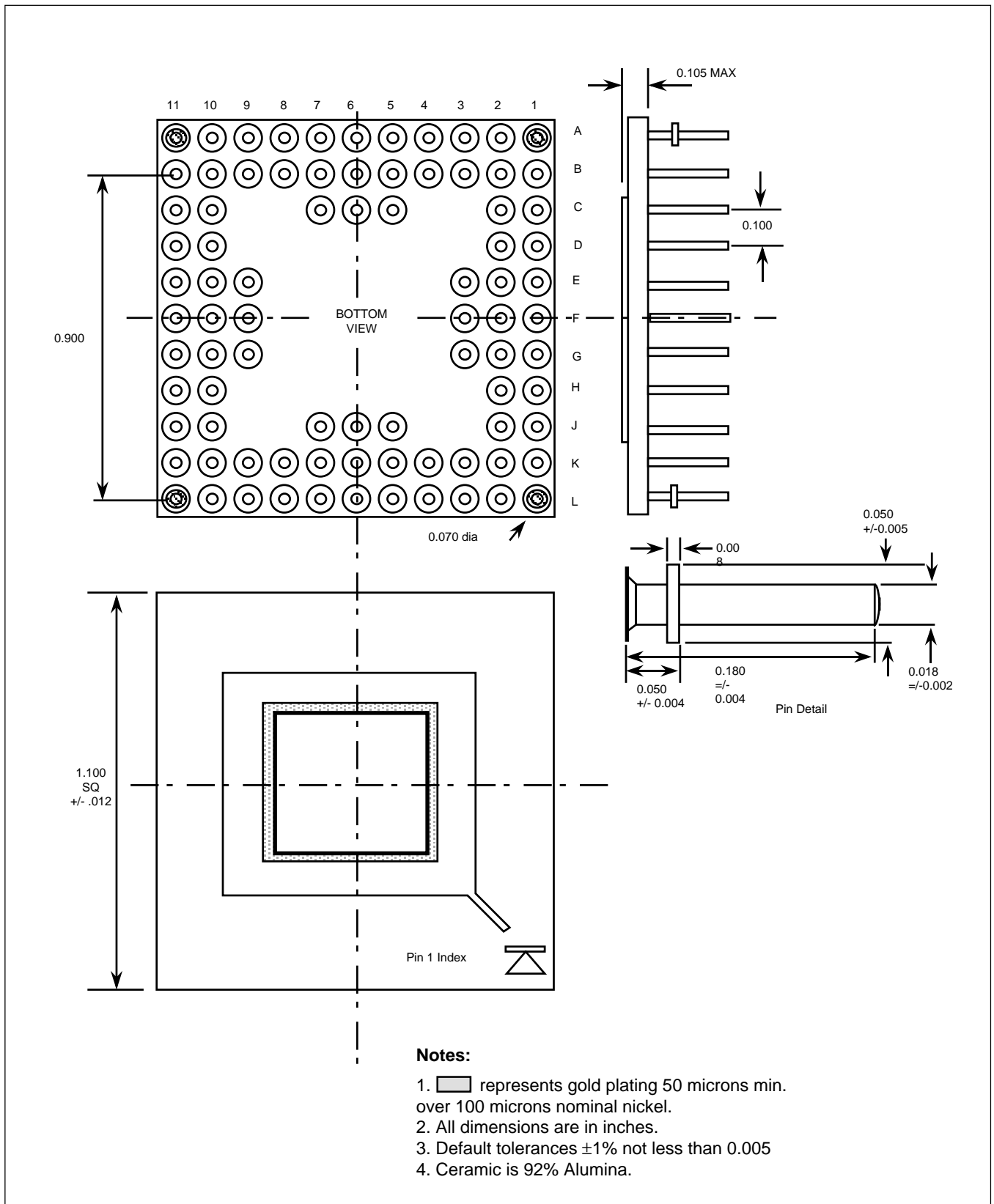


Figure 41b: 84-Pin Grid Array - Package Style A

12. RADIATION TOLERANCE

Total Dose Radiation Testing

For product procured to total dose radiation levels, each wafer lot will be approved when all sample devices pass the total dose radiation test.

The sample devices will be subjected to the total dose radiation level (Cobalt-60 Source), defined by the ordering code, and must continue to meet the electrical parameters specified in the data sheet. Electrical tests, pre and post irradiation, will be read and recorded.

Dynex Semiconductor can provide radiation testing compliant with MIL STD 883 test method 1019, Ionizing Radiation (Total Dose).

| | |
|--|---------------------------------------|
| Total Dose (Function to specification)* | 3x10 ⁵ Rad(Si) |
| Transient Upset (Stored data loss) | 5x10 ¹⁰ Rad(Si)/sec |
| Transient Upset (Survivability) | >1x10 ¹² Rad(Si)/sec |
| Neutron Hardness (Function to specification) | >1x10 ¹⁵ n/cm ² |
| Single Event Upset** | 1x10 ⁻¹¹ Errors/bit day |
| Latch Up | Not possible |

* Other total dose radiation levels available on request

** Worst case galactic cosmic ray upset - interplanetary/high altitude orbit

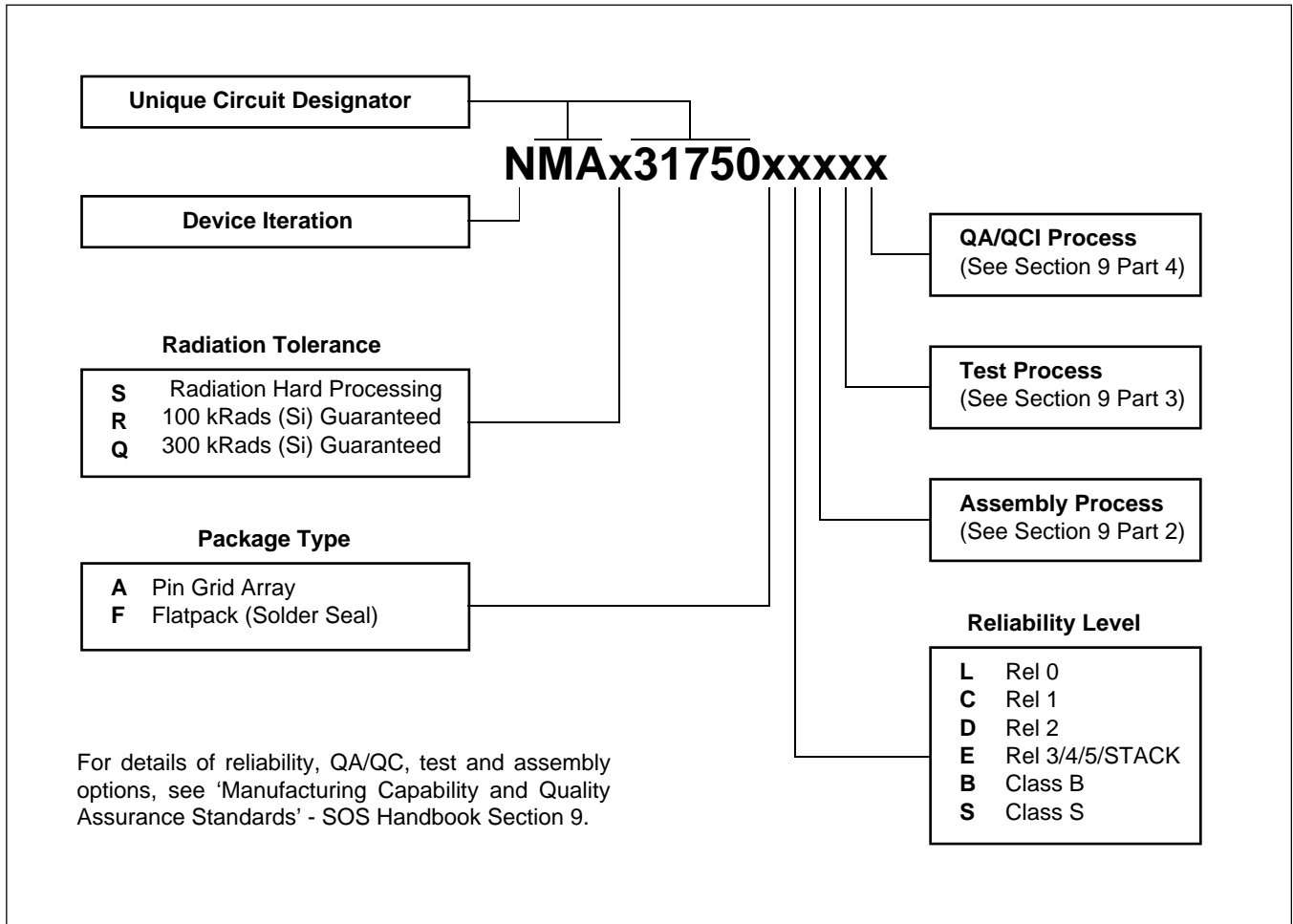
Figure 42: Radiation Hardness Parameters

13. RELATED DOCUMENTATION

A number of Applications Notes are available to support the information in this data sheets. Please call for details:

| Application Note | Describes |
|------------------|-------------------------|
| No. 2 | 1750B Mode |
| No. 3 | Use of Console Mode |
| No. 4 | Use of Interrupts |
| No. 8 | Use of VIO Instructions |
| No. 11 | Bus Arbitration |
| No. 14 | Use of NMA31750 Samples |
| No. 15 | Pipelining Instructions |

14. ORDERING INFORMATION



POWER ASSEMBLY CAPABILITY

The Power Assembly group was set up to provide a support service for those customers requiring more than the basic semiconductor, and has developed a flexible range of heatsink and clamping systems in line with advances in device voltages and current capability of our semiconductors.

We offer an extensive range of air and liquid cooled assemblies covering the full range of circuit designs in general use today. The Assembly group offers high quality engineering support dedicated to designing new units to satisfy the growing needs of our customers.

Using the latest CAD methods our team of design and applications engineers aim to provide the Power Assembly Complete Solution (PACs).

HEATSINKS

The Power Assembly group has its own proprietary range of extruded aluminium heatsinks which have been designed to optimise the performance of Dynex semiconductors. Data with respect to air natural, forced air and liquid cooling (with flow rates) is available on request.

For further information on device clamps, heatsinks and assemblies, please contact your nearest sales representative or Customer Services.



<http://www.dynexsemi.com>

e-mail: power_solutions@dynexsemi.com

HEADQUARTERS OPERATIONS
DYNEX SEMICONDUCTOR LTD
Doddington Road, Lincoln.
Lincolnshire. LN6 3LF. United Kingdom.
Tel: +44-(0)1522-500500
Fax: +44-(0)1522-500550

CUSTOMER SERVICE
Tel: +44 (0)1522 502753 / 502901. Fax: +44 (0)1522 500020

SALES OFFICES
Benelux, Italy & Switzerland: Tel: +33 (0)1 64 66 42 17. Fax: +33 (0)1 64 66 42 19.
France: Tel: +33 (0)2 47 55 75 52. Fax: +33 (0)2 47 55 75 59.
Germany, Northern Europe, Spain & Rest Of World: Tel: +44 (0)1522 502753 / 502901.
Fax: +44 (0)1522 500020
North America: Tel: (613) 723-7035. Fax: (613) 723-1518. Toll Free: 1.888.33.DYNEX (39639) /
Tel: (949) 733-3005. Fax: (949) 733-2986.

These offices are supported by Representatives and Distributors in many countries world-wide.
© Dynex Semiconductor 2002 TECHNICAL DOCUMENTATION – NOT FOR RESALE. PRODUCED IN UNITED KINGDOM

Datasheet Annotations:

Dynex Semiconductor annotate datasheets in the top right hand corner of the front page, to indicate product status. The annotations are as follows:-

Target Information: This is the most tentative form of information and represents a very preliminary specification. No actual design work on the product has been started.

Preliminary Information: The product is in design and development. The datasheet represents the product as it is understood but details may change.

Advance Information: The product design is complete and final characterisation for volume production is well in hand.

No Annotation: The product parameters are fixed and the product is available to datasheet specification.

This publication is issued to provide information only which (unless agreed by the Company in writing) may not be used, applied or reproduced for any purpose nor form part of any order or contract nor to be regarded as a representation relating to the products or services concerned. No warranty or guarantee express or implied is made regarding the capability, performance or suitability of any product or service. The Company reserves the right to alter without prior notice the specification, design or price of any product or service. Information concerning possible methods of use is provided as a guide only and does not constitute any guarantee that such methods of use will be satisfactory in a specific piece of equipment. It is the user's responsibility to fully determine the performance and suitability of any equipment using such information and to ensure that any publication or data used is up to date and has not been superseded. These products are not suitable for use in any medical products whose failure to perform may result in significant injury or death to the user. All products and materials are sold and services provided subject to the Company's conditions of sale, which are available on request.

All brand names and product names used in this publication are trademarks, registered trademarks or trade names of their respective owners.